

Madison Literary Club

May 13, 2024



ST MARCUS
SCHOOL



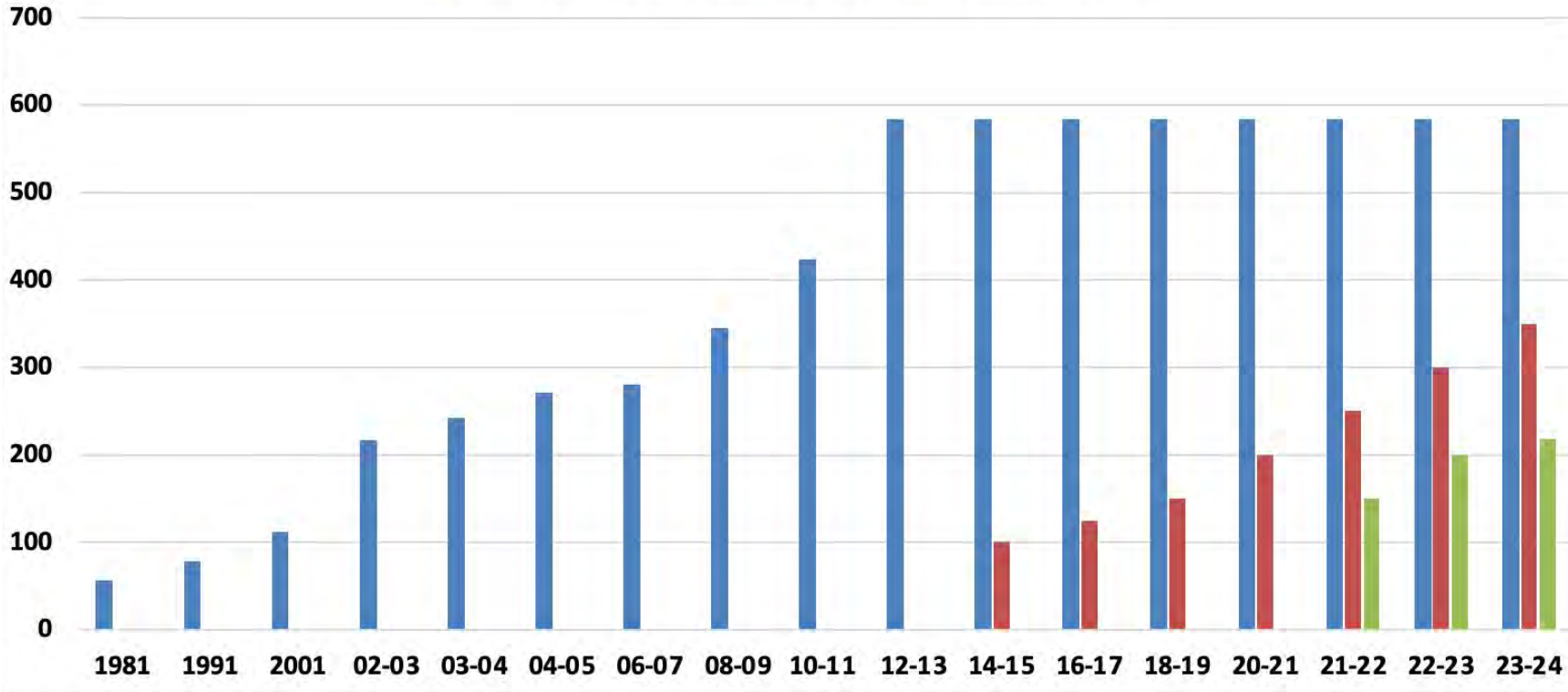
St. Marcus Lutheran School is a 4 star school, “exceeds expectations”

- 150 years old
- 1,200 students K3-8th grade
- 3 campus sites in historic Harambee
- 93% Black
- 90% high school graduation rate
- 89% student return rate
- 1% incarceration rate
- Random selection / diverse parental support



Campus Growth

■ North Avenue ■ Center Street ■ Burleigh Street



	Reading % Proficient	Math % Proficient	Reading % Below Basic	Math % Below Basic
St. Marcus	20.2%	24.6%	40%	34.4%
Carver Academy	6.3%	1.2%	73.1%	78.8%
OW Holmes	4.3%	0.7%	73.2%	81.8%
Rufus King MS	0%	0.6%	90.6%	93.6%
MLK Jr.	2.1%	0.4%	83.1%	96.3%
80/80 Schools	7%	4.9%	Over 70%	Over 80%



United States of America Historical Educational Ideals

“The good education of youth has been esteemed by wise men in all ages, as the surest foundation of the happiness of both private families and of commonwealths. Almost all governments have made it a principal object of their intention.”

Benjamin Franklin, 1749



United States of America Historical Educational Ideals

“Upon the subject of education I can only say that I view it as the most important subject which we as a people can be engaged in.”

President Abraham Lincoln, 1832



United States of America Historical Educational Ideals

“A republican government should be based on free and equal education among the people.”

Susan B. Anthony, 1900



United States of America Historical Educational Ideals

“Of all the civil rights for which the world has struggled and fought for 5,000 years, the right to learn is undoubtedly the most fundamental . . . The freedom to learn . . . has been bought by bitter sacrifice. And whatever we may think of the curtailment of other civil rights, we should fight to the last ditch to keep open the right to learn . . .”

W.E.B. DuBois, 1949



United States of America Historical Educational Ideals

“What the best and wisest parent wants for his own child, that must the community want for all of its children. Any other ideal for our schools is narrow and unlovely; acted upon, it destroys our democracy.”

John Dewey, 1907



Educational Crisis in Milwaukee

As of the 2023 Forward Exam:

- 47 schools with less than 5% proficient ELA
 - All but 3 70% or more black
- 89 schools with less than 5% proficient in math
 - All but 15 70% or more black



Pinpointing the MKE educational Crisis

37 schools less than 70% low-income
37% proficient in reading

42 schools more than 70% Hispanic
17% proficient in reading

114 schools more than 70% Black
8% proficient in reading

The crisis is in schools that are predominantly low-income and black.

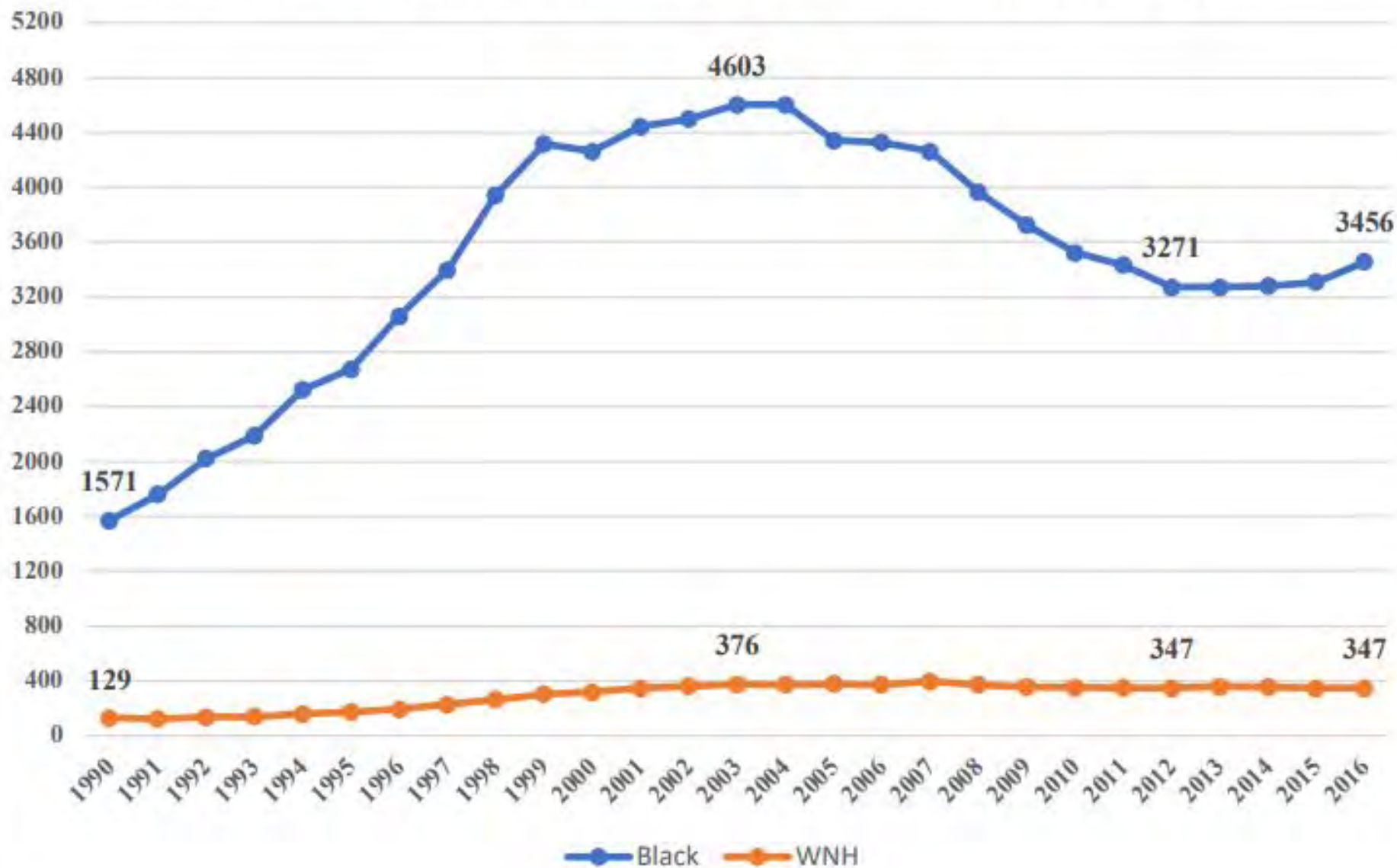


Outcomes of the Educational Crisis

- Wisconsin has the highest black / white educational attainment gap in the nation
- Wisconsin has the highest black male incarceration rate in the nation
- Milwaukee has the lowest % of blacks holding college or advanced degrees
- Milwaukee spends the greatest amount per capita on policing

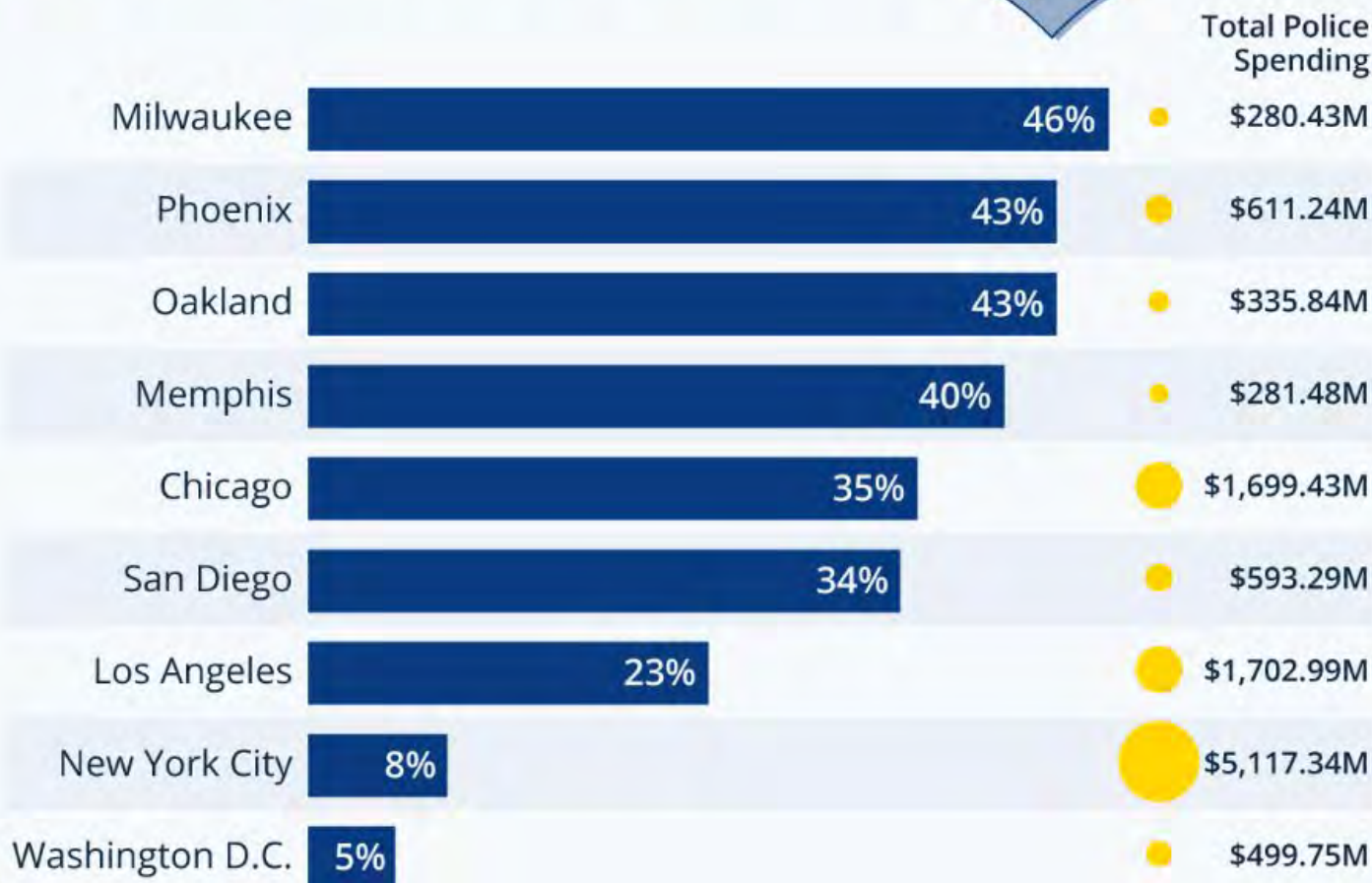


Chart 45:
Black and White Incarceration Rates in Milwaukee County: 1990-2016
Prison population by "county of commitment" per 100,000 residents, ages 15-64, by race



How Much Do U.S. Cities Spend On Policing?

Share of general fund expenditure* on policing in selected U.S. cities

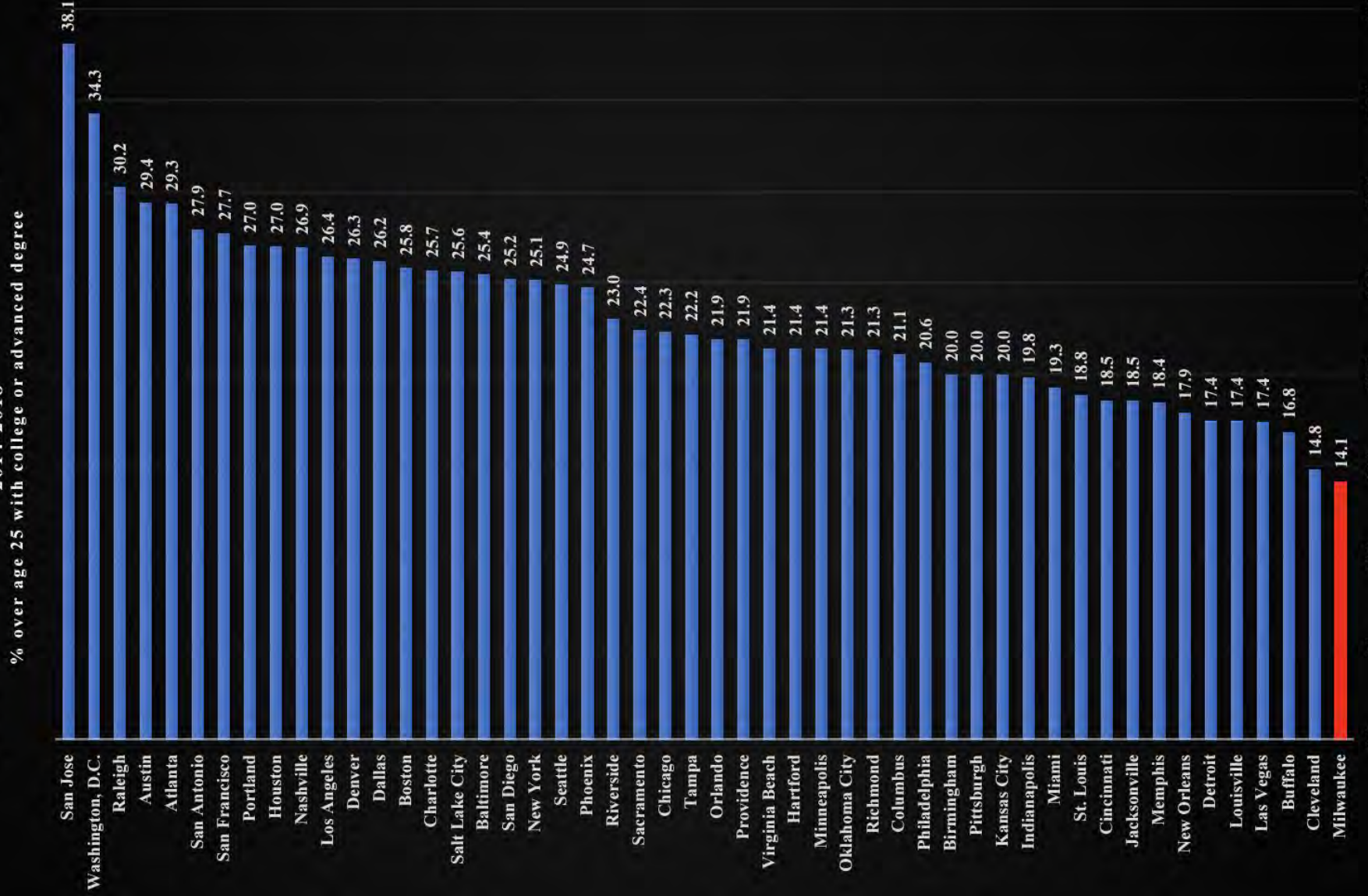


Data from Statista.com
<https://www.statista.com/chart/10593/how-much-do-us-cities-spend-on-policing/>



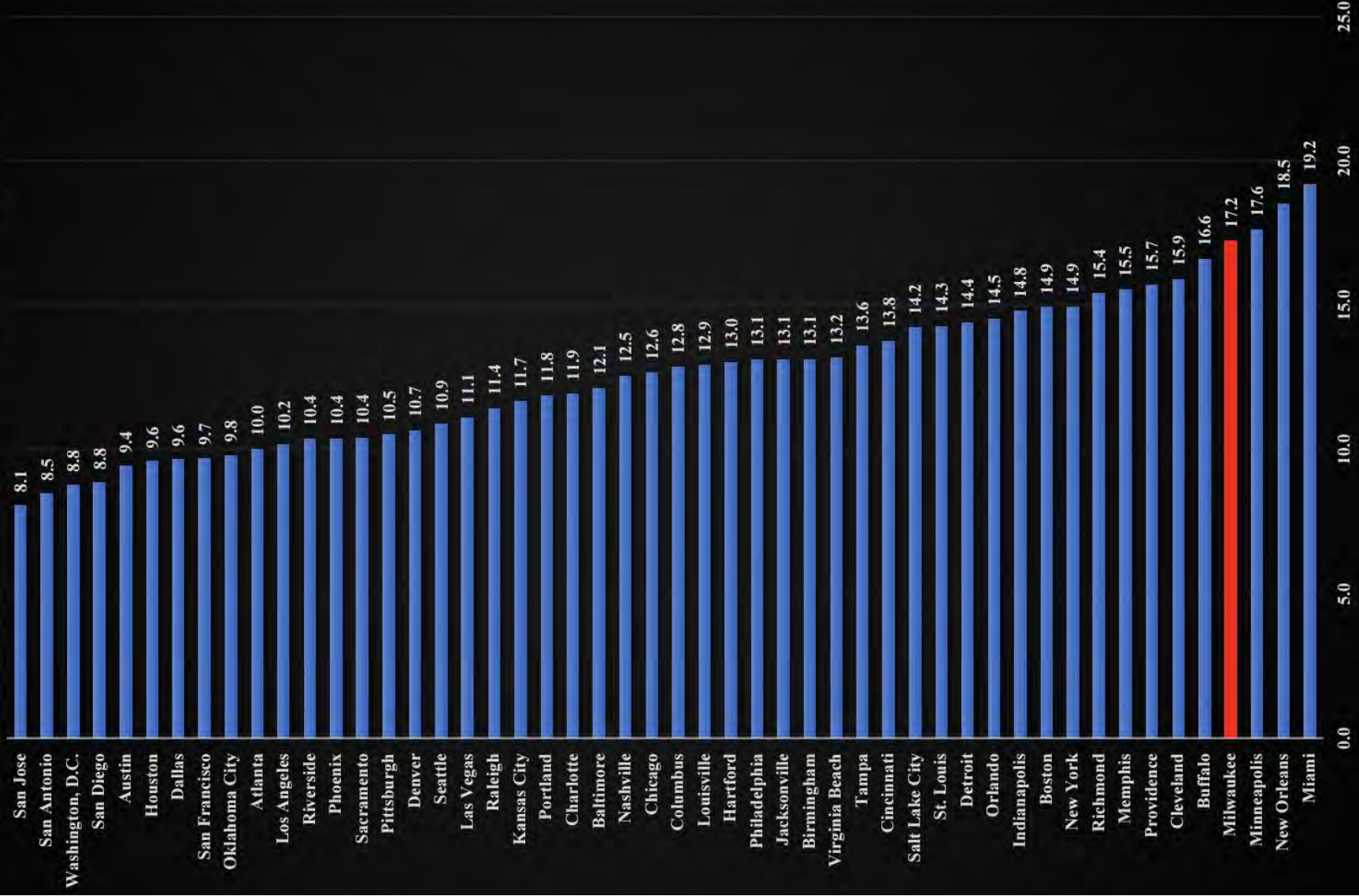
Percentage of Blacks Holding College or Advanced Degrees: 2014-2018

Chart 38:
Percentage of Blacks Holding College or Advanced Degrees:
2014-2018



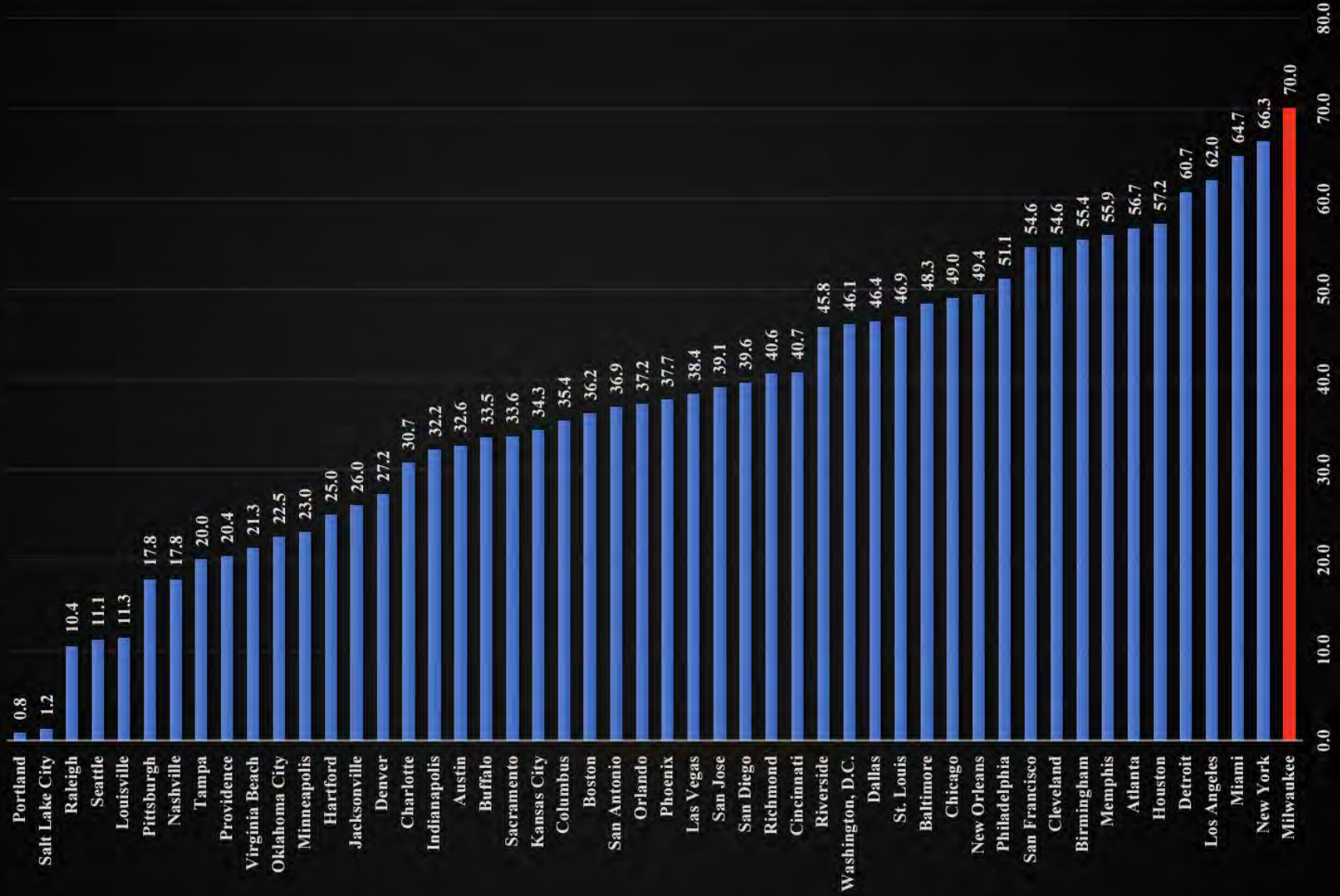
Percentage of Blacks Without a High School Degree: 2014-2018

Chart 39:
Percentage of Blacks Without a High School Degree: 2014-2018
% over age 25% without high school diploma or equivalent



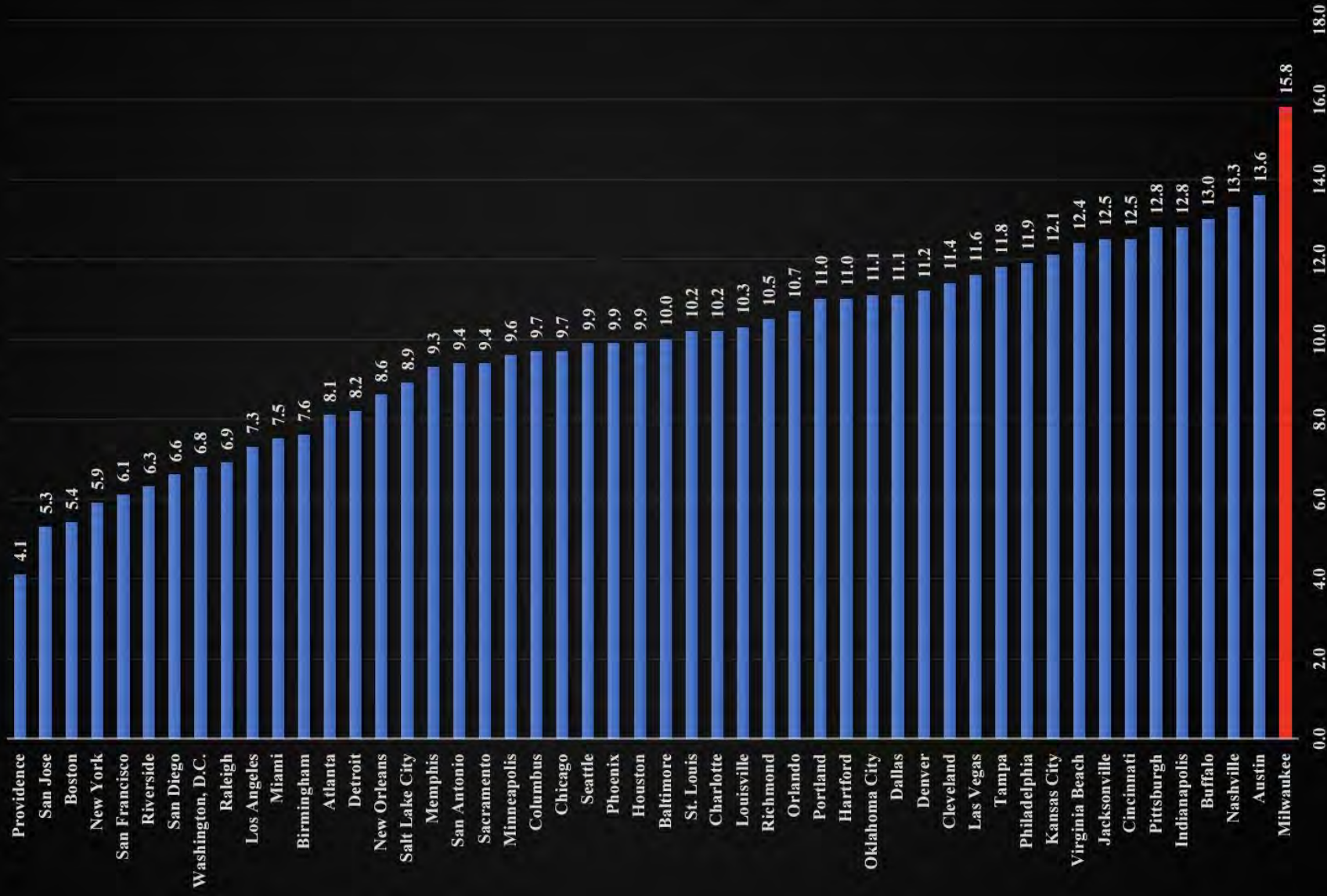
Percentage of Black Students Attending Hypersegregated Schools in the Nation's Largest Metro Areas: 2017-2018

Chart 41:
Percentage of Black Students Attending Hypersegregated Schools in the Nation's Largest Metropolitan Areas: 2017-2018
 (% attending 90%+ minority schools)



Black Male Incarceration Rates in the Nation's Largest Metro Areas

Chart 43:
Black Male Incarceration Rates in the Nation's Largest Metropolitan Areas
Percentage Born between 1978-83 who were incarcerated in 2010



Historic Problems

Within Schools (deep racism)

- Fight for employment opportunities
 - 20s - 50s
- Fight for desegregation
 - 60s to 80s
- Fight against unfair bussing
 - 70s to 80s
- Fight against unfair magnet structures
 - 80s and 90s
- Fight for alternatives (school choice)
 - 90s - present

Within the Community

- Collapse of industry/jobs
 - 70s and 80s
- Heroin / Crack epidemic
 - 80s and 90s
- Mass incarceration
 - 80s to the present
- Breakdown of the family
 - 80s to the present
- Collapse of the church
 - 90s to the present

Challenges Facing Black Students

Collapse of the family (single mothers, absent fathers), collapse of the church, hyper-segregation, poverty, trauma, social media.

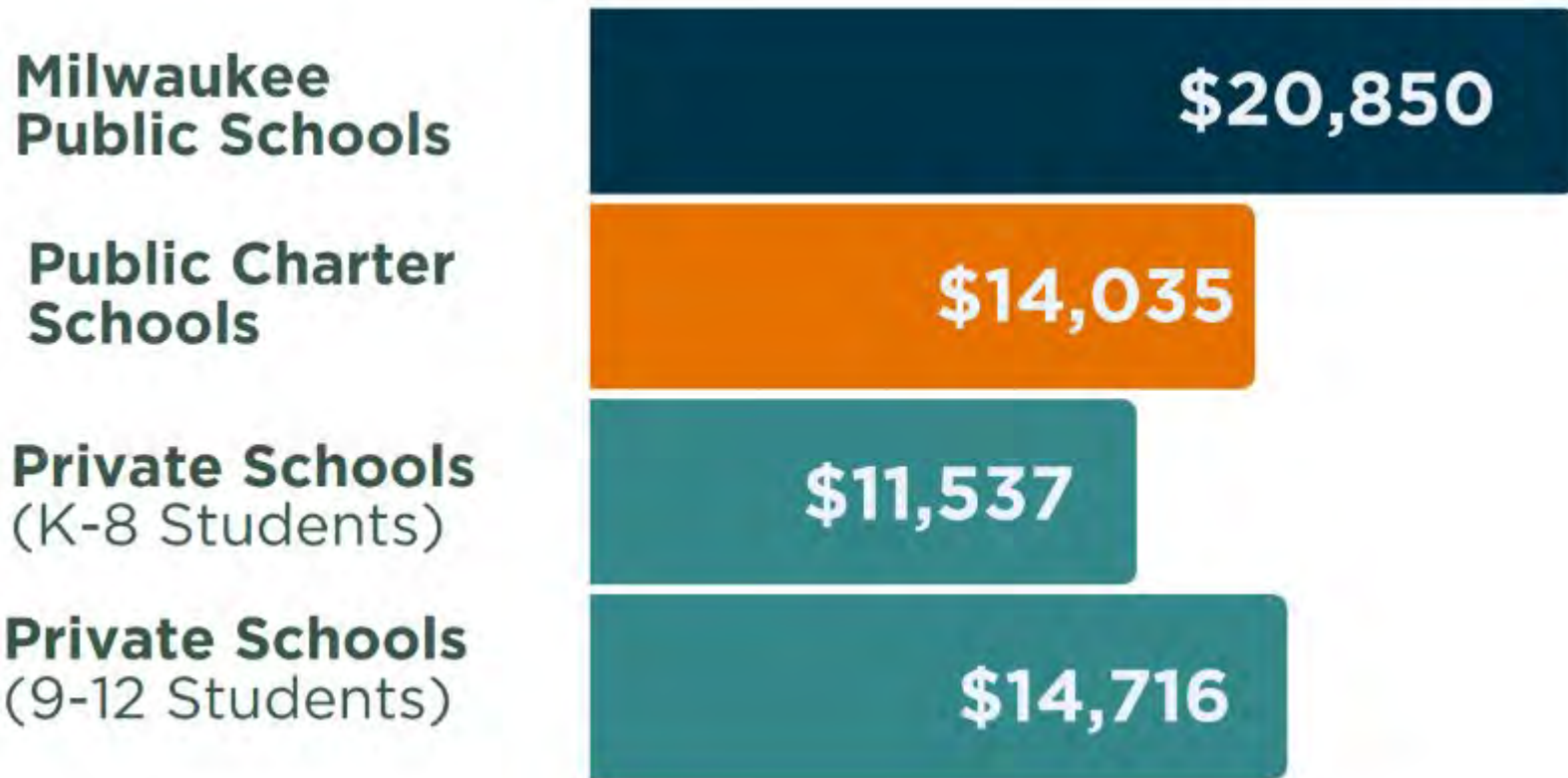
MPS

- Nearly impossible task
- Governance structure (Board)
- Management vs union imbalance
- Fiscal mismanagement
- Failure to downsize
- Focus on adults
- Unresponsive to competition
- Massive morale problems
- Lack of accountability

Private / Charter

- Nearly impossible task
- Inadequate funding
- Poor strategy or execution
- Lack of Accountability

2028 Milwaukee School Funding Based on Current Law



Institutional Racism

“But in one important area - education - we do have a system that is institutionally racist against blacks and other minorities; a system that traps them in failing schools and with no possibility of escape.”

Betsy Devos, Former US Secretary of Education

2019 Back to School Tour

Solutions

Acknowledge the problem and own it.

Engage in personal sacrifice to solve it.

Equitable funding for all students.

Resolve MPS governance issues.

Invest more heavily in birth to 4

Fix the state report card

End partisan politics - celebrate the middle.

Thank You!
henry.tyson@stmarcus.org



ST MARCUS
SCHOOL

“What the best and wisest parent wants for his own child, that must the community want for all of its children. Any other ideal for our schools is narrow and unlovely; acted upon, it destroys our democracy.”

John Dewey, 1908



Thank you!

henry.tyson@stmarcus.org



ST MARCUS
SCHOOL



SCHOOL NAME/TYPE	NUMBER OF STUDENTS	READING Proficient/Advanced	READING Minimal
Westside - District	173	1.8%	82.5%
Douglas - District	219	1.8%	86.6%
Brown - District	253	1.8%	90.0%
Holy Redeemer Christian - Voucher	237	1.7%	94.9%
Carter's Christian - Voucher	251	1.6%	91.8%
Hawthorne - District	243	1.4%	61.6%
Holmes - District	256	1.4%	87.5%
Muhammad Islamic - Voucher	119	1.3%	89.5%
Carson - District	359	1.2%	84.8%
LaFollette - District	185	1.0%	78.8%
Browning - District	259	1.0%	81.6%
Jackson - District	245	1.0%	89.6%
Clemens - District	303	0.8%	76.7%
King - District	300	0.8%	85.7%
Metcalfe - District	326	0.7%	89.0%
Townsend - District	300	0.6%	84.8%
Lancaster - District	296	0.6%	92.0%
Christian Faith - Voucher	63	0.0%	77.4%
Divine Destiny Christian - Voucher	50	0.0%	77.8%
Early View Christian - Voucher	136	0.0%	80.6%
Lifelong Learning - District	174	0.0%	89.7%
Hopkins-Lloyd - District	126	0.0%	92.3%
TOTAL	6,730	1.4%	84.2%

3,163 CHILDREN TESTED | 43 PROFICIENT | 94% BLACK

Educational Crisis in Milwaukee

2023-24 PER-PUPIL FUNDING BY SECTOR

Milwaukee
Public Schools

\$12,774

Public Charter
Schools

\$11,385

Private Schools
(K-8 students)

\$9,893

Private Schools
(9-12 students)

\$12,387

