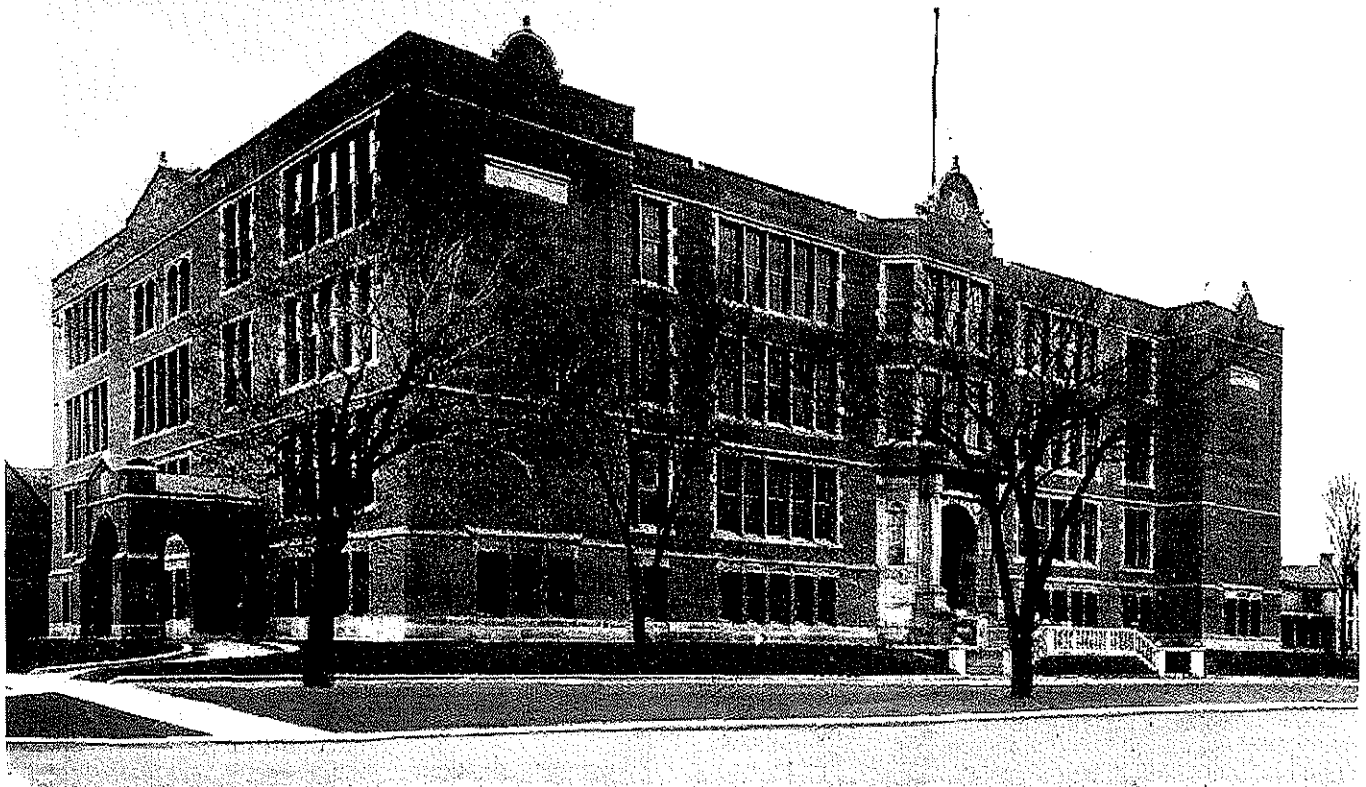


MADISON METROPOLITAN SCHOOL DISTRICT FACILITY ASSESSMENT EXECUTIVE SUMMARY

A628. High School, Madison, Wis.



Planning for the Future of Madison Schools

March 2010

Madison Metropolitan School District Facility Assessment

History

In 1996, MMSD conducted its District Wide Facility Condition Assessment Audit. This was prepared in response to the Blue Ribbon Panel Report date August 1995. This report was conducted by Barton & Malow Company. That report identified over \$200 million in facility needs over the next ten years. A referendum in 1996 for \$200 million over ten years failed.

In 1998, Building Services edited the Barton & Malow report to develop a five year project list that only contained the items in most serious need of replacement. This was used as the basis for a 1999 maintenance referendum in the amount of \$20 million over five years. That referendum passed.

A similar referendum was passed in 2004 for another \$20 million over five years. \$500,000 of this money was set aside each year for technology. In year 5 of this referendum, \$3 million was returned to the tax payers in light of state funding cuts.

The original Barton & Malow Facility Condition Assessment Audit has become outdated. A Request for Proposals was issued and Durrant Engineers was selected by the Board of Education to conduct the next Facility Assessment. That information, along with internal information from principals, custodians, trades employees and other staff, is contained here.

In 1995 The Blue Ribbon Panel Report recommended a maintenance funding level of 2% of replacement value of MMSD facilities. Current replacement costs are approximately \$170/square foot. MMSD has 4, 581,954 square feet. This equates to a recommended annual funding level of \$15,578,643.

Summary

The 2010 Facility Assessment identifies \$85,753,506 of immediate maintenance needs. It does not address items that have been traditionally handled through our work order system and the annual operating budget. This includes items such as floor tile, carpeting, casework, ceilings tile, painting, wall treatments, minor fencing projects, grounds maintenance and window treatments. The Facility Assessment includes projects divided into specific areas

1. Mechanical, Electrical, Plumbing, Building Envelope, gym floors, interior doors, high school athletic fields.
2. Roofing
3. Pavement
4. Playgrounds

In previous years, all projects were prioritized in order to insure life safety items took precedence over other items like parking lots. It is now necessary to spread funding over multiple trade areas in order to prevent one area from becoming excessively deteriorated. The 2010 Facility Assessment recommends funding all areas of facility needs annually, at varying levels, according to the condition assigned.

Madison Metropolitan School District

Durrant Infrastructure Data-Collection Database

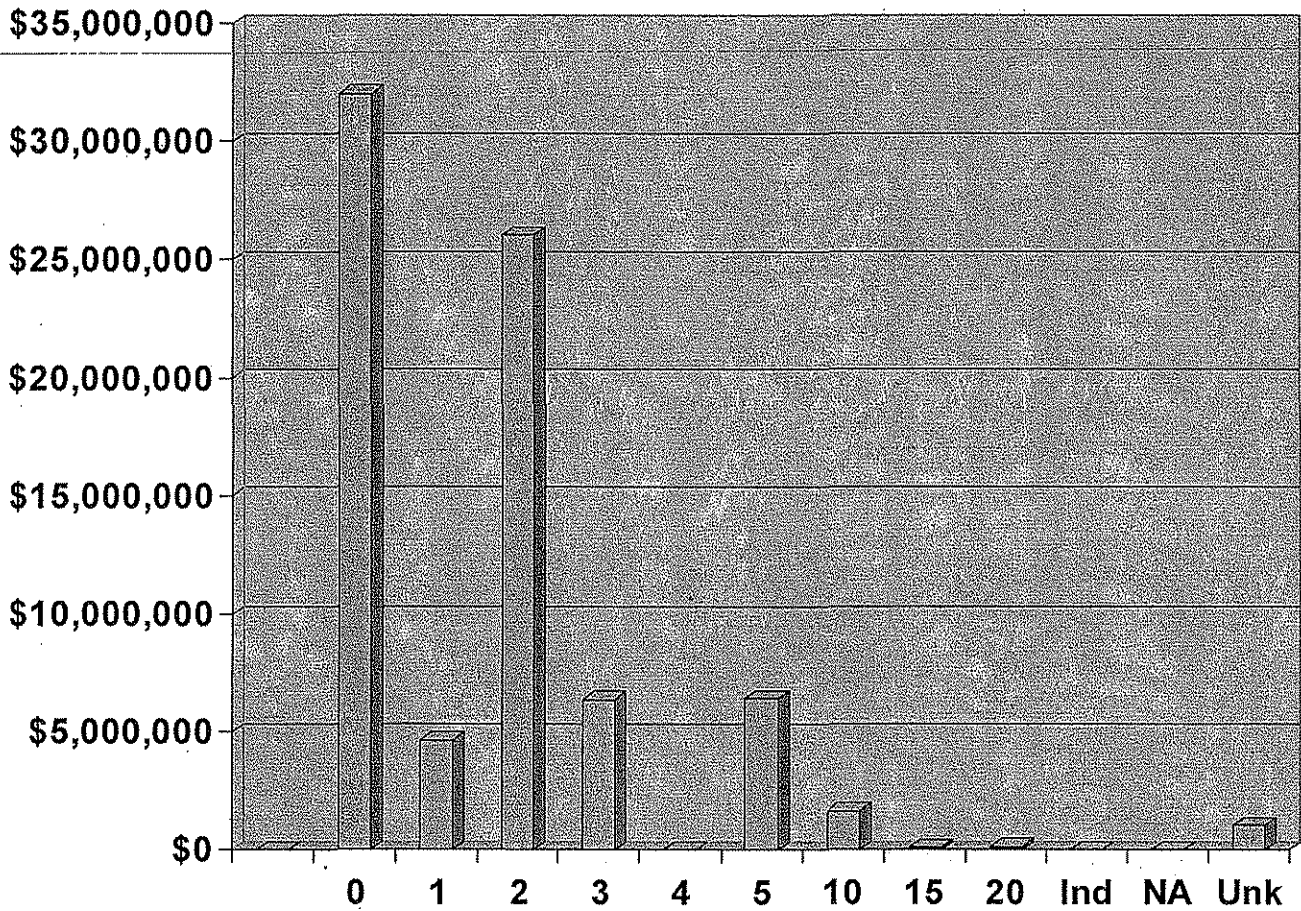
The explanation of the differential between the lower cost versus the higher cost and designated as "Low \$" and "High \$" respectively on the output reports is as follows:

Both categories of the estimated construction costs are based on present value dollars. The lower cost category ("Low \$") is established to reflect anticipated dollars for multiple renovation projects under one contract, such that all work is bid in a common time frame. The higher cost category ("High \$") is established to reflect the anticipated costs if each renovation is completed on an individual basis and not subject to a common construction contract.

The primary emphasis should be the Estimated Remaining Life ("ERL") associated with a given component. The shorter the "ERL" the greater importance of component replacement must be given in the decision making process. The components with the ERL's from 0 to 5 should be given due attention.

ERL Key:

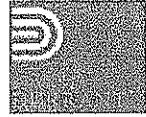
- 00 = Address immediately
- 01 = Correct within 1 year
- 05 = Correct in 2-5 years
- 10 = Correct in 6-10 years
- IND = Indefinite life - Address after 10 years
- NA = Does Not Meet CURRENT Codes but "Grandfathered"
- UNK = Unknown life but needs monitored
- CP - Completed



Bar Chart: Probable High Correction Cost vs Est. Remaining Life (ERL)



00 = Address immediately
 01 = Correct within 1 year
 05 = Correct in 2-5 years
 10 = Correct in 6-10 years
 15 = Correct in 11-15 years
 20 = Correct in 16-20 years
 IND = Indefinite life - Address after 10 years
 NA = Not applicable
 UNK = Unknown life but needs monitored
 CP = Completed



Building Cost Summary Report

Facility Condition Assessment - Grades D, F & X

2/17/2010

001 Allis Elementary School / Nuestro Mundo

Estimated Remaining Life (in years):	00		
Total for ERL 00 (10 detail records)		Low: \$100,200	High: \$138,100
<hr/>			
Estimated Remaining Life (in years):	01		
Total for ERL 01 (11 detail records)		Low: \$70,900	High: \$104,700
Estimated Remaining Life (in years):	02		
Total for ERL 02 (6 detail records)		Low: \$34,300	High: \$51,900
Estimated Remaining Life (in years):	03		
Total for ERL 03 (9 detail records)		Low: \$24,000	High: \$36,000
Estimated Remaining Life (in years):	05		
Total for ERL 05 (24 detail records)		Low: \$167,900	High: \$249,600
Estimated Remaining Life (in years):	10		
Total for ERL 10 (2 detail records)		Low: \$21,000	High: \$29,000
Estimated Remaining Life (in years):	20		
Total for ERL 20 (6 detail records)		Low: \$0	High: \$600
Estimated Remaining Life (in years):	NA		
Total for ERL NA (1 detail record)		Low: \$1,000	High: \$2,000
Estimated Remaining Life (in years):	Unk		
Total for ERL Unk (3 detail records)		Low: \$2,100	High: \$3,300
<hr/>			
Total for Building 001 (72 detail records)		Low: \$421,400	High: \$615,200

004 Crestwood Elementary School

Estimated Remaining Life (in years):	00		
Total for ERL 00 (17 detail records)		Low: \$578,660	High: \$651,250
Estimated Remaining Life (in years):	01		
Total for ERL 01 (24 detail records)		Low: \$164,700	High: \$220,600
Estimated Remaining Life (in years):	02		
Total for ERL 02 (12 detail records)		Low: \$64,900	High: \$96,800
Estimated Remaining Life (in years):	03		

Total for ERL 03 (4 detail records)	Low: \$32,000	High: \$48,000
Estimated Remaining Life (in years): 05		
Total for ERL 05 (2 detail records)	Low: \$6,000	High: \$9,000
Estimated Remaining Life (in years): 10		
Total for ERL 10 (5 detail records)	Low: \$10,000	High: \$15,000
Estimated Remaining Life (in years): 15		
Total for ERL 15 (2 detail records)	Low: \$4,000	High: \$6,000
Estimated Remaining Life (in years): 20		
Total for ERL 20 (6 detail records)	Low: \$0	High: \$600
Estimated Remaining Life (in years): Unk		
Total for ERL Unk (6 detail records)	Low: \$5,500	High: \$8,700
<hr/>		
Total for Building 004 (78 detail records)	Low: \$865,760	High: \$1,055,950

006 Elvehjem Elementary School

Estimated Remaining Life (in years): 00		
Total for ERL 00 (13 detail records)	Low: \$11,560	High: \$19,900
Estimated Remaining Life (in years): 01		
Total for ERL 01 (8 detail records)	Low: \$21,700	High: \$27,700
Estimated Remaining Life (in years): 02		
Total for ERL 02 (31 detail records)	Low: \$254,400	High: \$391,500
Estimated Remaining Life (in years): 03		
Total for ERL 03 (30 detail records)	Low: \$932,050	High: \$1,081,100
Estimated Remaining Life (in years): 05		
Total for ERL 05 (11 detail records)	Low: \$25,500	High: \$38,000
Estimated Remaining Life (in years): 10		
Total for ERL 10 (12 detail records)	Low: \$22,000	High: \$34,000
Estimated Remaining Life (in years): 20		
Total for ERL 20 (2 detail records)	Low: \$1,000	High: \$2,100
Estimated Remaining Life (in years): Unk		
Total for ERL Unk (9 detail records)	Low: \$5,000	High: \$7,000
<hr/>		
Total for Building 006 (116 detail records)	Low: \$1,273,210	High: \$1,601,300

007 Emerson Elementary School

Estimated Remaining Life (in years): 00		
Total for ERL 00 (8 detail records)	Low: \$3,250	High: \$5,100
Estimated Remaining Life (in years): 01		

Total for ERL 01 (7 detail records)	Low: \$184,400	High: \$213,600
Estimated Remaining Life (in years): 02		
Total for ERL 02 (1 detail record)	Low: \$180,000	High: \$200,000
Estimated Remaining Life (in years): 03		
Total for ERL 03 (2 detail records)	Low: \$6,000	High: \$8,000
Estimated Remaining Life (in years): 05		
Total for ERL 05 (6 detail records)	Low: \$31,000	High: \$47,000
Estimated Remaining Life (in years): 10		
Total for ERL 10 (10 detail records)	Low: \$23,000	High: \$37,000
Estimated Remaining Life (in years): 15		
Total for ERL 15 (3 detail records)	Low: \$6,000	High: \$9,000
Estimated Remaining Life (in years): 20		
Total for ERL 20 (5 detail records)	Low: \$0	High: \$500
Estimated Remaining Life (in years): Unk		
Total for ERL Unk (1 detail record)	Low: \$2,000	High: \$4,000
Total for Building 007 (43 detail records)	Low: \$435,650	High: \$524,200

008 Franklin Elementary School

Estimated Remaining Life (in years): 00		
Total for ERL 00 (7 detail records)	Low: \$539,250	High: \$590,800
Estimated Remaining Life (in years): 01		
Total for ERL 01 (13 detail records)	Low: \$215,400	High: \$253,800
Estimated Remaining Life (in years): 02		
Total for ERL 02 (11 detail records)	Low: \$376,500	High: \$464,600
Estimated Remaining Life (in years): 03		
Total for ERL 03 (2 detail records)	Low: \$58,000	High: \$87,000
Estimated Remaining Life (in years): 05		
Total for ERL 05 (4 detail records)	Low: \$13,000	High: \$22,000
Estimated Remaining Life (in years): 10		
Total for ERL 10 (7 detail records)	Low: \$14,000	High: \$21,000
Total for Building 008 (44 detail records)	Low: \$1,216,150	High: \$1,439,200

009 Glendale Elementary School

Estimated Remaining Life (in years): 00		
Total for ERL 00 (1 detail record)	Low: \$10,000	High: \$15,000
Estimated Remaining Life (in years): 01		

Total for ERL 01 (4 detail records)	Low: \$4,700	High: \$7,900
Estimated Remaining Life (in years): 02		
Total for ERL 02 (8 detail records)	Low: \$6,000	High: \$11,200
Estimated Remaining Life (in years): 03		
Total for ERL 03 (34 detail records)	Low: \$347,700	High: \$519,600
Estimated Remaining Life (in years): 05		
Total for ERL 05 (12 detail records)	Low: \$32,900	High: \$70,100
Estimated Remaining Life (in years): 10		
Total for ERL 10 (7 detail records)	Low: \$12,300	High: \$18,400
Estimated Remaining Life (in years): 20		
Total for ERL 20 (8 detail records)	Low: \$0	High: \$800
Estimated Remaining Life (in years): Ind		
Total for ERL Ind (1 detail record)	Low: \$100	High: \$200
Estimated Remaining Life (in years): Unk		
Total for ERL Unk (2 detail records)	Low: \$3,100	High: \$4,200
<hr/>		
Total for Building 009 (77 detail records)	Low: \$416,800	High: \$647,400

011 Falk Elementary School

Estimated Remaining Life (in years): 00		
Total for ERL 00 (7 detail records)	Low: \$10,750	High: \$19,000
Estimated Remaining Life (in years): 01		
Total for ERL 01 (5 detail records)	Low: \$46,100	High: \$62,200
Estimated Remaining Life (in years): 02		
Total for ERL 02 (1 detail record)	Low: \$4,000	High: \$6,000
Estimated Remaining Life (in years): 03		
Total for ERL 03 (2 detail records)	Low: \$520,000	High: \$560,000
Estimated Remaining Life (in years): 05		
Total for ERL 05 (12 detail records)	Low: \$55,900	High: \$79,500
Estimated Remaining Life (in years): 10		
Total for ERL 10 (4 detail records)	Low: \$8,000	High: \$12,000
Estimated Remaining Life (in years): 15		
Total for ERL 15 (1 detail record)	Low: \$2,000	High: \$3,000
Estimated Remaining Life (in years): Unk		
Total for ERL Unk (1 detail record)	Low: \$4,000	High: \$5,000
<hr/>		
Total for Building 011 (33 detail records)	Low: \$650,750	High: \$746,700

012 Hawthorne Elementary SchoolEstimated Remaining Life (in years): **00**Total for ERL 00 (12 detail records) Low: **\$7,980** High: **\$13,190**Estimated Remaining Life (in years): **01**Total for ERL 01 (17 detail records) Low: **\$94,000** High: **\$128,700**Estimated Remaining Life (in years): **02**Total for ERL 02 (6 detail records) Low: **\$93,000** High: **\$157,000**Estimated Remaining Life (in years): **03**Total for ERL 03 (40 detail records) Low: **\$293,000** High: **\$441,000**

Estimated Remaining Life (in years): **05**Total for ERL 05 (3 detail records) Low: **\$283,000** High: **\$305,000**Estimated Remaining Life (in years): **10**Total for ERL 10 (5 detail records) Low: **\$6,000** High: **\$9,200**Estimated Remaining Life (in years): **15**Total for ERL 15 (3 detail records) Low: **\$0** High: **\$300**Estimated Remaining Life (in years): **20**Total for ERL 20 (4 detail records) Low: **\$0** High: **\$400**Estimated Remaining Life (in years): **Unk**Total for ERL Unk (4 detail records) Low: **\$18,600** High: **\$25,400**

Total for Building 012 (94 detail records) Low: **\$795,580** High: **\$1,080,190**

013 Hoyt Elementary SchoolEstimated Remaining Life (in years): **00**Total for ERL 00 (9 detail records) Low: **\$536,300** High: **\$583,800**Estimated Remaining Life (in years): **01**Total for ERL 01 (1 detail record) Low: **\$100** High: **\$200**Estimated Remaining Life (in years): **02**Total for ERL 02 (9 detail records) Low: **\$30,000** High: **\$48,000**Estimated Remaining Life (in years): **03**Total for ERL 03 (4 detail records) Low: **\$10,000** High: **\$15,000**Estimated Remaining Life (in years): **05**Total for ERL 05 (28 detail records) Low: **\$107,000** High: **\$169,000**Estimated Remaining Life (in years): **10**Total for ERL 10 (6 detail records) Low: **\$16,000** High: **\$24,000**Estimated Remaining Life (in years): **20**

Total for ERL 20 (5 detail records)	Low: \$0	High: \$500
Total for Building 013 (62 detail records)	Low: \$699,400	High: \$840,500

014 Lake View Elementary School

Estimated Remaining Life (in years): 00		
Total for ERL 00 (8 detail records)	Low: \$6,740	High: \$8,880
Estimated Remaining Life (in years): 01		
Total for ERL 01 (5 detail records)	Low: \$86,000	High: \$115,000
Estimated Remaining Life (in years): 02		
Total for ERL 02 (3 detail records)	Low: \$51,700	High: \$72,800
Estimated Remaining Life (in years): 03		
Total for ERL 03 (7 detail records)	Low: \$28,400	High: \$42,500
Estimated Remaining Life (in years): 05		
Total for ERL 05 (8 detail records)	Low: \$17,000	High: \$26,000
Estimated Remaining Life (in years): 10		
Total for ERL 10 (2 detail records)	Low: \$7,000	High: \$13,000
Estimated Remaining Life (in years): 20		
Total for ERL 20 (9 detail records)	Low: \$0	High: \$900
Estimated Remaining Life (in years): NA		
Total for ERL NA (1 detail record)	Low: \$200	High: \$300
Total for Building 014 (43 detail records)	Low: \$197,040	High: \$279,380

015 Chavez Elementary School

Estimated Remaining Life (in years): 00		
Total for ERL 00 (2 detail records)	Low: \$600	High: \$1,200
Estimated Remaining Life (in years): 02		
Total for ERL 02 (1 detail record)	Low: \$300	High: \$400
Estimated Remaining Life (in years): 05		
Total for ERL 05 (1 detail record)	Low: \$1,200	High: \$1,400
Estimated Remaining Life (in years): Unk		
Total for ERL Unk (1 detail record)	Low: \$1,250	High: \$2,500
Total for Building 015 (5 detail records)	Low: \$3,350	High: \$5,500

016 Lapham Elementary School

Estimated Remaining Life (in years): 00		
Total for ERL 00 (4 detail records)	Low: \$440	High: \$1,000

Estimated Remaining Life (in years):	01		
Total for ERL 01 (13 detail records)		Low: \$84,110	High: \$112,450
Estimated Remaining Life (in years):	02		
Total for ERL 02 (14 detail records)		Low: \$115,700	High: \$176,000
Estimated Remaining Life (in years):	03		
Total for ERL 03 (24 detail records)		Low: \$283,200	High: \$416,400
Estimated Remaining Life (in years):	05		
Total for ERL 05 (10 detail records)		Low: \$281,000	High: \$323,000
Estimated Remaining Life (in years):	10		
Total for ERL 10 (7 detail records)		Low: \$22,000	High: \$43,000
<hr/>			
Estimated Remaining Life (in years):	15		
Total for ERL 15 (1 detail record)		Low: \$2,000	High: \$3,000
Estimated Remaining Life (in years):	20		
Total for ERL 20 (6 detail records)		Low: \$500	High: \$1,500
<hr/>			
Total for Building 016 (79 detail records)		Low: \$788,950	High: \$1,076,350

017 Muir Elementary School

Estimated Remaining Life (in years):	00		
Total for ERL 00 (18 detail records)		Low: \$211,510	High: \$253,850
Estimated Remaining Life (in years):	01		
Total for ERL 01 (9 detail records)		Low: \$8,600	High: \$13,400
Estimated Remaining Life (in years):	02		
Total for ERL 02 (20 detail records)		Low: \$138,500	High: \$238,000
Estimated Remaining Life (in years):	03		
Total for ERL 03 (2 detail records)		Low: \$31,000	High: \$47,000
Estimated Remaining Life (in years):	05		
Total for ERL 05 (1 detail record)		Low: \$2,000	High: \$3,000
Estimated Remaining Life (in years):	10		
Total for ERL 10 (10 detail records)		Low: \$22,000	High: \$33,000
Estimated Remaining Life (in years):	15		
Total for ERL 15 (4 detail records)		Low: \$8,000	High: \$12,000
Estimated Remaining Life (in years):	20		
Total for ERL 20 (7 detail records)		Low: \$0	High: \$700
Estimated Remaining Life (in years):	NA		
Total for ERL NA (1 detail record)		Low: \$0	High: \$0
Estimated Remaining Life (in years):	Unk		

Total for ERL Unk (5 detail records) Low: \$11,400 High: \$15,500

Total for Building 017 (77 detail records) Low: \$433,010 High: \$616,450

019 Lowell Elementary School

Estimated Remaining Life (in years): **00**

Total for ERL 00 (6 detail records) Low: \$6,800 High: \$10,200

Estimated Remaining Life (in years): **01**

Total for ERL 01 (14 detail records) Low: \$89,350 High: \$131,900

Estimated Remaining Life (in years): **02**

Total for ERL 02 (8 detail records) Low: \$17,500 High: \$28,500

Estimated Remaining Life (in years): **03**

Total for ERL 03 (8 detail records) Low: \$44,100 High: \$66,200

Estimated Remaining Life (in years): **05**

Total for ERL 05 (67 detail records) Low: \$586,000 High: \$778,000

Estimated Remaining Life (in years): **10**

Total for ERL 10 (5 detail records) Low: \$15,000 High: \$23,100

Estimated Remaining Life (in years): **20**

Total for ERL 20 (14 detail records) Low: \$0 High: \$1,400

Estimated Remaining Life (in years): **Unk**

Total for ERL Unk (1 detail record) Low: \$800 High: \$1,200

Total for Building 019 (123 detail records) Low: \$759,550 High: \$1,040,500

021 Mendota Elementary School

Estimated Remaining Life (in years): **00**

Total for ERL 00 (5 detail records) Low: \$6,160 High: \$9,410

Estimated Remaining Life (in years): **01**

Total for ERL 01 (19 detail records) Low: \$34,700 High: \$44,700

Estimated Remaining Life (in years): **02**

Total for ERL 02 (17 detail records) Low: \$48,700 High: \$76,000

Estimated Remaining Life (in years): **03**

Total for ERL 03 (8 detail records) Low: \$20,000 High: \$30,000

Estimated Remaining Life (in years): **05**

Total for ERL 05 (11 detail records) Low: \$26,800 High: \$40,400

Estimated Remaining Life (in years): **10**

Total for ERL 10 (6 detail records) Low: \$38,000 High: \$52,000

Estimated Remaining Life (in years): **20**

Total for ERL 20 (2 detail records) Low: \$0 High: \$200

Total for Building 021 (68 detail records) Low: \$174,360 High: \$252,710

022 Midvale Elementary School

Estimated Remaining Life (in years): 00

Total for ERL 00 (16 detail records) Low: \$352,600 High: \$400,800

Estimated Remaining Life (in years): 01

Total for ERL 01 (9 detail records) Low: \$37,300 High: \$57,400

Estimated Remaining Life (in years): 02

Total for ERL 02 (11 detail records) Low: \$56,000 High: \$78,000

Estimated Remaining Life (in years): 03

Total for ERL 03 (15 detail records) Low: \$34,000 High: \$50,000

Estimated Remaining Life (in years): 05

Total for ERL 05 (6 detail records) Low: \$185,300 High: \$207,000

Estimated Remaining Life (in years): 10

Total for ERL 10 (13 detail records) Low: \$60,000 High: \$90,000

Estimated Remaining Life (in years): NA

Total for ERL NA (1 detail record) Low: \$0 High: \$0

Estimated Remaining Life (in years): Unk

Total for ERL Unk (5 detail records) Low: \$423,700 High: \$505,300

Total for Building 022 (76 detail records) Low: \$1,148,900 High: \$1,388,500

023 Thoreau Elementary School

Estimated Remaining Life (in years): 00

Total for ERL 00 (8 detail records) Low: \$14,800 High: \$20,400

Estimated Remaining Life (in years): 01

Total for ERL 01 (6 detail records) Low: \$17,000 High: \$29,500

Estimated Remaining Life (in years): 02

Total for ERL 02 (5 detail records) Low: \$12,200 High: \$18,400

Estimated Remaining Life (in years): 05

Total for ERL 05 (4 detail records) Low: \$9,000 High: \$16,000

Estimated Remaining Life (in years): 10

Total for ERL 10 (2 detail records) Low: \$4,000 High: \$6,000

Estimated Remaining Life (in years): NA

Total for ERL NA (2 detail records) Low: \$50 High: \$100

Estimated Remaining Life (in years): Unk

Total for ERL Unk (2 detail records) Low: \$650 High: \$1,225

Total for Building 023 (29 detail records) Low: \$57,700 High: \$91,625

026 Randall Elementary School

Estimated Remaining Life (in years): 00

Total for ERL 00 (7 detail records) Low: \$545,000 High: \$595,000

Estimated Remaining Life (in years): 01

Total for ERL 01 (7 detail records) Low: \$59,600 High: \$89,600

Estimated Remaining Life (in years): 02

Total for ERL 02 (8 detail records) Low: \$30,600 High: \$46,200

Estimated Remaining Life (in years): 03

Total for ERL 03 (10 detail records) Low: \$164,000 High: \$196,000

Estimated Remaining Life (in years): 05

Total for ERL 05 (7 detail records) Low: \$15,100 High: \$22,200

Estimated Remaining Life (in years): 10

Total for ERL 10 (6 detail records) Low: \$11,000 High: \$17,000

Estimated Remaining Life (in years): 20

Total for ERL 20 (4 detail records) Low: \$0 High: \$400

Estimated Remaining Life (in years): Unk

Total for ERL Unk (4 detail records) Low: \$15,900 High: \$21,600

Total for Building 026 (53 detail records) Low: \$841,200 High: \$988,000

029 Shorewood Elementary School

Estimated Remaining Life (in years): 00

Total for ERL 00 (14 detail records) Low: \$226,350 High: \$343,100

Estimated Remaining Life (in years): 01

Total for ERL 01 (12 detail records) Low: \$70,400 High: \$98,500

Estimated Remaining Life (in years): 02

Total for ERL 02 (13 detail records) Low: \$71,000 High: \$109,000

Estimated Remaining Life (in years): 03

Total for ERL 03 (7 detail records) Low: \$28,700 High: \$45,400

Estimated Remaining Life (in years): 05

Total for ERL 05 (2 detail records) Low: \$12,600 High: \$18,900

Estimated Remaining Life (in years): 10

Total for ERL 10 (6 detail records) Low: \$12,000 High: \$18,000

Estimated Remaining Life (in years): 20

Total for ERL 20 (3 detail records)	Low: \$0	High: \$300
Estimated Remaining Life (in years): NA		
Total for ERL NA (1 detail record)	Low: \$0	High: \$0
<hr/>		
Total for Building 029 (58 detail records)	Low: \$421,050	High: \$633,200

032 Stephens Elementary School

Estimated Remaining Life (in years): 00		
Total for ERL 00 (4 detail records)	Low: \$530,300	High: \$575,400
Estimated Remaining Life (in years): 01		
Total for ERL 01 (14 detail records)	Low: \$15,750	High: \$26,600
Estimated Remaining Life (in years): 02		
Total for ERL 02 (6 detail records)	Low: \$4,560	High: \$7,120
Estimated Remaining Life (in years): 03		
Total for ERL 03 (9 detail records)	Low: \$18,000	High: \$27,000
Estimated Remaining Life (in years): 05		
Total for ERL 05 (7 detail records)	Low: \$11,300	High: \$17,200
Estimated Remaining Life (in years): 10		
Total for ERL 10 (10 detail records)	Low: \$23,000	High: \$37,000
Estimated Remaining Life (in years): 20		
Total for ERL 20 (8 detail records)	Low: \$0	High: \$800
<hr/>		
Total for Building 032 (58 detail records)	Low: \$602,910	High: \$691,120

036 Kennedy Elementary School

Estimated Remaining Life (in years): 00		
Total for ERL 00 (12 detail records)	Low: \$311,970	High: \$344,800
Estimated Remaining Life (in years): 01		
Total for ERL 01 (15 detail records)	Low: \$110,400	High: \$184,700
Estimated Remaining Life (in years): 02		
Total for ERL 02 (6 detail records)	Low: \$33,300	High: \$50,400
Estimated Remaining Life (in years): 03		
Total for ERL 03 (22 detail records)	Low: \$231,000	High: \$347,000
Estimated Remaining Life (in years): 05		
Total for ERL 05 (19 detail records)	Low: \$605,000	High: \$698,100
Estimated Remaining Life (in years): 10		
Total for ERL 10 (8 detail records)	Low: \$16,000	High: \$24,000
Estimated Remaining Life (in years): 20		

Total for ERL 20 (5 detail records)	Low: \$0	High: \$500
Estimated Remaining Life (in years): Unk		
Total for ERL Unk (3 detail records)	Low: \$3,000	High: \$5,000
<hr/>		
Total for Building 036 (90 detail records)	Low: \$1,310,670	High: \$1,654,500

037 Lincoln Elementary School

Estimated Remaining Life (in years): 00		
Total for ERL 00 (17 detail records)	Low: \$120,460	High: \$163,450
Estimated Remaining Life (in years): 01		
Total for ERL 01 (6 detail records)	Low: \$11,200	High: \$16,300
Estimated Remaining Life (in years): 02		
Total for ERL 02 (1 detail record)	Low: \$10,000	High: \$15,000
Estimated Remaining Life (in years): 03		
Total for ERL 03 (8 detail records)	Low: \$20,400	High: \$29,600
Estimated Remaining Life (in years): 05		
Total for ERL 05 (4 detail records)	Low: \$11,000	High: \$20,000
Estimated Remaining Life (in years): 10		
Total for ERL 10 (8 detail records)	Low: \$25,000	High: \$36,000
<hr/>		
Total for Building 037 (44 detail records)	Low: \$198,060	High: \$280,350

038 Huegel Elementary School

Estimated Remaining Life (in years): 00		
Total for ERL 00 (17 detail records)	Low: \$202,600	High: \$271,000
Estimated Remaining Life (in years): 01		
Total for ERL 01 (5 detail records)	Low: \$264,700	High: \$287,800
Estimated Remaining Life (in years): 02		
Total for ERL 02 (3 detail records)	Low: \$12,000	High: \$23,000
Estimated Remaining Life (in years): 03		
Total for ERL 03 (3 detail records)	Low: \$8,000	High: \$11,000
Estimated Remaining Life (in years): 05		
Total for ERL 05 (6 detail records)	Low: \$17,500	High: \$23,000
Estimated Remaining Life (in years): 10		
Total for ERL 10 (13 detail records)	Low: \$42,200	High: \$52,400
Estimated Remaining Life (in years): NA		
Total for ERL NA (1 detail record)	Low: \$0	High: \$0
Estimated Remaining Life (in years): Unk		

Total for ERL Unk (4 detail records) Low: \$4,350 High: \$6,500

Total for Building 038 (52 detail records) Low: \$551,350 High: \$674,700

053 Sandburg Elementary School

Estimated Remaining Life (in years): 00

Total for ERL 00 (7 detail records) Low: \$4,710 High: \$6,920

Estimated Remaining Life (in years): 01

Total for ERL 01 (7 detail records) Low: \$20,950 High: \$32,300

Estimated Remaining Life (in years): 02

Total for ERL 02 (2 detail records) Low: \$8,200 High: \$12,300

Estimated Remaining Life (in years): 03

Total for ERL 03 (3 detail records) Low: \$4,900 High: \$6,500

Estimated Remaining Life (in years): 05

Total for ERL 05 (3 detail records) Low: \$7,400 High: \$13,500

Estimated Remaining Life (in years): 10

Total for ERL 10 (2 detail records) Low: \$1,000 High: \$2,100

Estimated Remaining Life (in years): 20

Total for ERL 20 (5 detail records) Low: \$0 High: \$500

Estimated Remaining Life (in years): NA

Total for ERL NA (2 detail records) Low: \$225 High: \$350

Total for Building 053 (31 detail records) Low: \$47,385 High: \$74,470

062 Olson Elementary School

Estimated Remaining Life (in years): 00

Total for ERL 00 (1 detail record) Low: \$20,000 High: \$25,000

Total for Building 062 (1 detail record) Low: \$20,000 High: \$25,000

071 Lindbergh Elementary School

Estimated Remaining Life (in years): 00

Total for ERL 00 (8 detail records) Low: \$10,110 High: \$14,420

Estimated Remaining Life (in years): 01

Total for ERL 01 (4 detail records) Low: \$63,200 High: \$89,300

Estimated Remaining Life (in years): 03

Total for ERL 03 (1 detail record) Low: \$4,000 High: \$5,000

Estimated Remaining Life (in years): 05

Total for ERL 05 (3 detail records) Low: \$10,000 High: \$15,000

Estimated Remaining Life (in years):	10		
Total for ERL 10 (1 detail record)		Low: \$2,000	High: \$3,000
Estimated Remaining Life (in years):	15		
Total for ERL 15 (2 detail records)		Low: \$7,000	High: \$13,000
Estimated Remaining Life (in years):	20		
Total for ERL 20 (3 detail records)		Low: \$0	High: \$300
Estimated Remaining Life (in years):	Unk		
Total for ERL Unk (1 detail record)		Low: \$50	High: \$100
<hr/>			
Total for Building 071 (23 detail records)		Low: \$96,360	High: \$140,120

072 Leopold Elementary School

Estimated Remaining Life (in years):	00		
Total for ERL 00 (14 detail records)		Low: \$33,660	High: \$47,950
Estimated Remaining Life (in years):	01		
Total for ERL 01 (4 detail records)		Low: \$12,000	High: \$22,500
Estimated Remaining Life (in years):	05		
Total for ERL 05 (5 detail records)		Low: \$9,100	High: \$15,200
Estimated Remaining Life (in years):	10		
Total for ERL 10 (12 detail records)		Low: \$93,000	High: \$127,000
Estimated Remaining Life (in years):	15		
Total for ERL 15 (1 detail record)		Low: \$2,000	High: \$3,000
Estimated Remaining Life (in years):	NA		
Total for ERL NA (1 detail record)		Low: \$0	High: \$0
Estimated Remaining Life (in years):	Unk		
Total for ERL Unk (1 detail record)		Low: \$3,000	High: \$6,000
<hr/>			
Total for Building 072 (38 detail records)		Low: \$152,760	High: \$221,650

141 East High School

Estimated Remaining Life (in years):	00		
Total for ERL 00 (145 detail records)		Low: \$11,189,270	High: \$16,797,950
Estimated Remaining Life (in years):	01		
Total for ERL 01 (40 detail records)		Low: \$502,900	High: \$789,300
Estimated Remaining Life (in years):	02		
Total for ERL 02 (195 detail records)		Low: \$831,380	High: \$1,507,400
Estimated Remaining Life (in years):	03		
Total for ERL 03 (66 detail records)		Low: \$344,450	High: \$490,200

Estimated Remaining Life (in years):	04		
	Total for ERL 04 (1 detail record)	Low: \$800	High: \$1,200
Estimated Remaining Life (in years):	05		
	Total for ERL 05 (47 detail records)	Low: \$380,800	High: \$616,600
Estimated Remaining Life (in years):	10		
	Total for ERL 10 (4 detail records)	Low: \$6,400	High: \$9,500
Estimated Remaining Life (in years):	15		
	Total for ERL 15 (1 detail record)	Low: \$0	High: \$100
Estimated Remaining Life (in years):	20		
	Total for ERL 20 (3 detail records)	Low: \$0	High: \$300
<hr/>			
Estimated Remaining Life (in years):	Unk		
	Total for ERL Unk (4 detail records)	Low: \$50	High: \$300
<hr/>			
	Total for Building 141 (506 detail records)	Low: \$13,256,050	High: \$20,212,850
<hr/>			

142 LaFollette High School

Estimated Remaining Life (in years):	00		
	Total for ERL 00 (71 detail records)	Low: \$992,470	High: \$1,376,870
Estimated Remaining Life (in years):	01		
	Total for ERL 01 (52 detail records)	Low: \$115,300	High: \$172,700
Estimated Remaining Life (in years):	02		
	Total for ERL 02 (142 detail records)	Low: \$1,056,000	High: \$1,632,400
Estimated Remaining Life (in years):	03		
	Total for ERL 03 (14 detail records)	Low: \$46,000	High: \$69,000
Estimated Remaining Life (in years):	05		
	Total for ERL 05 (17 detail records)	Low: \$218,400	High: \$316,500
Estimated Remaining Life (in years):	10		
	Total for ERL 10 (25 detail records)	Low: \$74,100	High: \$111,200
Estimated Remaining Life (in years):	15		
	Total for ERL 15 (4 detail records)	Low: \$9,000	High: \$11,200
Estimated Remaining Life (in years):	20		
	Total for ERL 20 (12 detail records)	Low: \$2,000	High: \$4,100
Estimated Remaining Life (in years):	NA		
	Total for ERL NA (1 detail record)	Low: \$0	High: \$0
Estimated Remaining Life (in years):	Unk		
	Total for ERL Unk (2 detail records)	Low: \$6,800	High: \$13,200

Total for Building 142 (340 detail records)	Low: \$2,520,070	High: \$3,707,170
---	------------------	-------------------

143 West High School

Estimated Remaining Life (in years): **00**

Total for ERL 00 (135 detail records) Low: \$1,413,850 High: \$1,837,750

Estimated Remaining Life (in years): **01**

Total for ERL 01 (70 detail records) Low: \$343,500 High: \$507,400

Estimated Remaining Life (in years): **02**

Total for ERL 02 (93 detail records) Low: \$12,141,200 High: \$18,137,300

Estimated Remaining Life (in years): **03**

Total for ERL 03 (15 detail records) Low: \$337,000 High: \$406,100

Estimated Remaining Life (in years): **05**

Total for ERL 05 (53 detail records) Low: \$478,800 High: \$680,600

Estimated Remaining Life (in years): **10**

Total for ERL 10 (18 detail records) Low: \$22,900 High: \$35,200

Estimated Remaining Life (in years): **15**

Total for ERL 15 (5 detail records) Low: \$0 High: \$500

Estimated Remaining Life (in years): **20**

Total for ERL 20 (15 detail records) Low: \$0 High: \$1,500

Estimated Remaining Life (in years): **NA**

Total for ERL NA (1 detail record) Low: \$0 High: \$0

Estimated Remaining Life (in years): **Unk**

Total for ERL Unk (3 detail records) Low: \$267,000 High: \$293,000

Total for Building 143 (408 detail records)	Low: \$15,004,250	High: \$21,899,350
---	-------------------	--------------------

145 Memorial High School

Estimated Remaining Life (in years): **00**

Total for ERL 00 (38 detail records) Low: \$407,560 High: \$510,600

Estimated Remaining Life (in years): **01**

Total for ERL 01 (51 detail records) Low: \$123,000 High: \$166,300

Estimated Remaining Life (in years): **02**

Total for ERL 02 (23 detail records) Low: \$643,500 High: \$802,600

Estimated Remaining Life (in years): **03**

Total for ERL 03 (13 detail records) Low: \$181,000 High: \$280,200

Estimated Remaining Life (in years): **05**

Total for ERL 05 (17 detail records) Low: \$196,600 High: \$304,100

Estimated Remaining Life (in years): **10**

Total for ERL 10 (35 detail records) Low: **\$163,100** High: **\$289,300**

Estimated Remaining Life (in years): **15**

Total for ERL 15 (3 detail records) Low: **\$3,000** High: **\$5,100**

Estimated Remaining Life (in years): **20**

Total for ERL 20 (11 detail records) Low: **\$0** High: **\$1,100**

Estimated Remaining Life (in years): **NA**

Total for ERL NA (1 detail record) Low: **\$0** High: **\$0**

Estimated Remaining Life (in years): **Unk**

Total for ERL Unk (2 detail records) Low: **\$10** High: **\$150**

Total for Building 145 (194 detail records) Low: **\$1,717,770** High: **\$2,359,450**

203 Cherokee Middle School

Estimated Remaining Life (in years): **00**

Total for ERL 00 (12 detail records) Low: **\$47,110** High: **\$114,950**

Estimated Remaining Life (in years): **01**

Total for ERL 01 (21 detail records) Low: **\$7,150** High: **\$15,900**

Estimated Remaining Life (in years): **02**

Total for ERL 02 (6 detail records) Low: **\$15,300** High: **\$33,800**

Estimated Remaining Life (in years): **03**

Total for ERL 03 (5 detail records) Low: **\$10,500** High: **\$15,000**

Estimated Remaining Life (in years): **05**

Total for ERL 05 (10 detail records) Low: **\$36,000** High: **\$54,100**

Estimated Remaining Life (in years): **10**

Total for ERL 10 (7 detail records) Low: **\$14,000** High: **\$21,000**

Estimated Remaining Life (in years): **20**

Total for ERL 20 (6 detail records) Low: **\$0** High: **\$600**

Estimated Remaining Life (in years): **NA**

Total for ERL NA (1 detail record) Low: **\$0** High: **\$0**

Estimated Remaining Life (in years): **Unk**

Total for ERL Unk (2 detail records) Low: **\$2,100** High: **\$3,000**

Total for Building 203 (70 detail records) Low: **\$132,160** High: **\$258,350**

210 Black Hawk Middle / Gompers Elementary School

Estimated Remaining Life (in years): **00**

Total for ERL 00 (20 detail records) Low: **\$847,800** High: **\$939,200**

Estimated Remaining Life (in years):	01		
	Total for ERL 01 (18 detail records)	Low: \$57,300	High: \$91,700
Estimated Remaining Life (in years):	02		
	Total for ERL 02 (23 detail records)	Low: \$66,000	High: \$99,000
Estimated Remaining Life (in years):	03		
	Total for ERL 03 (21 detail records)	Low: \$165,000	High: \$233,000
Estimated Remaining Life (in years):	05		
	Total for ERL 05 (17 detail records)	Low: \$272,000	High: \$323,000
Estimated Remaining Life (in years):	10		
	Total for ERL 10 (17 detail records)	Low: \$66,600	High: \$105,800
<hr/>			
Estimated Remaining Life (in years):	15		
	Total for ERL 15 (2 detail records)	Low: \$4,000	High: \$6,000
Estimated Remaining Life (in years):	NA		
	Total for ERL NA (1 detail record)	Low: \$0	High: \$0
Estimated Remaining Life (in years):	Unk		
	Total for ERL Unk (5 detail records)	Low: \$4,150	High: \$5,900
<hr/>			
	Total for Building 210 (124 detail records)	Low: \$1,482,850	High: \$1,803,600

220 O'Keeffe Middle / Marquette Elementary School

Estimated Remaining Life (in years):	00		
	Total for ERL 00 (14 detail records)	Low: \$546,710	High: \$596,050
Estimated Remaining Life (in years):	01		
	Total for ERL 01 (14 detail records)	Low: \$66,200	High: \$102,100
Estimated Remaining Life (in years):	02		
	Total for ERL 02 (7 detail records)	Low: \$31,500	High: \$60,000
Estimated Remaining Life (in years):	03		
	Total for ERL 03 (58 detail records)	Low: \$150,500	High: \$244,000
Estimated Remaining Life (in years):	05		
	Total for ERL 05 (21 detail records)	Low: \$98,500	High: \$129,000
Estimated Remaining Life (in years):	10		
	Total for ERL 10 (8 detail records)	Low: \$91,000	High: \$124,000
Estimated Remaining Life (in years):	15		
	Total for ERL 15 (1 detail record)	Low: \$2,000	High: \$3,000
Estimated Remaining Life (in years):	NA		
	Total for ERL NA (1 detail record)	Low: \$0	High: \$0
Estimated Remaining Life (in years):	Unk		

Total for ERL Unk (3 detail records) Low: \$5,900 High: \$8,200

Total for Building 220 (127 detail records) Low: \$992,310 High: \$1,266,350

225 Toki Middle / Orchard Ridge Elementary School

Estimated Remaining Life (in years): 00

Total for ERL 00 (41 detail records) Low: \$731,150 High: \$943,700

Estimated Remaining Life (in years): 01

Total for ERL 01 (7 detail records) Low: \$46,500 High: \$53,600

Estimated Remaining Life (in years): 02

Total for ERL 02 (19 detail records) Low: \$52,000 High: \$81,000

Estimated Remaining Life (in years): 03

Total for ERL 03 (3 detail records) Low: \$4,700 High: \$7,000

Estimated Remaining Life (in years): 05

Total for ERL 05 (16 detail records) Low: \$77,000 High: \$129,000

Estimated Remaining Life (in years): 10

Total for ERL 10 (9 detail records) Low: \$29,000 High: \$51,100

Estimated Remaining Life (in years): 20

Total for ERL 20 (11 detail records) Low: \$0 High: \$1,100

Estimated Remaining Life (in years): NA

Total for ERL NA (1 detail record) Low: \$0 High: \$0

Estimated Remaining Life (in years): Unk

Total for ERL Unk (3 detail records) Low: \$4,300 High: \$5,500

Total for Building 225 (110 detail records) Low: \$944,650 High: \$1,272,000

227 Whitehorse Middle / Schenk Elementary School

Estimated Remaining Life (in years):

Total for ERL (2 detail records) Low: \$4,500 High: \$6,500

Estimated Remaining Life (in years): 00

Total for ERL 00 (26 detail records) Low: \$849,660 High: \$947,550

Estimated Remaining Life (in years): 01

Total for ERL 01 (17 detail records) Low: \$70,000 High: \$96,700

Estimated Remaining Life (in years): 02

Total for ERL 02 (22 detail records) Low: \$77,000 High: \$110,000

Estimated Remaining Life (in years): 03

Total for ERL 03 (11 detail records) Low: \$27,000 High: \$39,000

Estimated Remaining Life (in years): 05

Total for ERL 05 (21 detail records)	Low: \$63,800	High: \$106,900
Estimated Remaining Life (in years): 10		
Total for ERL 10 (13 detail records)	Low: \$23,000	High: \$34,600
Estimated Remaining Life (in years): 15		
Total for ERL 15 (2 detail records)	Low: \$0	High: \$200
Estimated Remaining Life (in years): 20		
Total for ERL 20 (23 detail records)	Low: \$0	High: \$2,300
Estimated Remaining Life (in years): NA		
Total for ERL NA (1 detail record)	Low: \$0	High: \$0
Estimated Remaining Life (in years): Unk		
Total for ERL Unk (6 detail records)	Low: \$35,100	High: \$48,400
Total for Building 227 (144 detail records)	Low: \$1,150,060	High: \$1,392,150

228 Sherman Middle / Shabazz City High School

Estimated Remaining Life (in years): 00		
Total for ERL 00 (51 detail records)	Low: \$997,410	High: \$1,187,150
Estimated Remaining Life (in years): 01		
Total for ERL 01 (7 detail records)	Low: \$50,200	High: \$70,400
Estimated Remaining Life (in years): 02		
Total for ERL 02 (10 detail records)	Low: \$55,800	High: \$84,200
Estimated Remaining Life (in years): 03		
Total for ERL 03 (5 detail records)	Low: \$115,000	High: \$144,000
Estimated Remaining Life (in years): 05		
Total for ERL 05 (9 detail records)	Low: \$278,000	High: \$337,000
Estimated Remaining Life (in years): 10		
Total for ERL 10 (7 detail records)	Low: \$13,000	High: \$20,000
Estimated Remaining Life (in years): 15		
Total for ERL 15 (2 detail records)	Low: \$0	High: \$200
Estimated Remaining Life (in years): 20		
Total for ERL 20 (20 detail records)	Low: \$75,000	High: \$101,900
Estimated Remaining Life (in years): NA		
Total for ERL NA (1 detail record)	Low: \$0	High: \$0
Estimated Remaining Life (in years): Unk		
Total for ERL Unk (5 detail records)	Low: \$9,100	High: \$11,300
Total for Building 228 (117 detail records)	Low: \$1,593,510	High: \$1,956,150

231 Spring Harbor Middle SchoolEstimated Remaining Life (in years): **00**Total for ERL 00 (17 detail records) Low: **\$559,900** High: **\$623,200**Estimated Remaining Life (in years): **01**Total for ERL 01 (4 detail records) Low: **\$17,600** High: **\$28,800**Estimated Remaining Life (in years): **02**Total for ERL 02 (10 detail records) Low: **\$60,000** High: **\$93,000**Estimated Remaining Life (in years): **03**Total for ERL 03 (8 detail records) Low: **\$17,000** High: **\$30,000**

Estimated Remaining Life (in years): **05**Total for ERL 05 (6 detail records) Low: **\$20,000** High: **\$29,000**Estimated Remaining Life (in years): **10**Total for ERL 10 (8 detail records) Low: **\$24,000** High: **\$36,000**Estimated Remaining Life (in years): **NA**Total for ERL NA (1 detail record) Low: **\$0** High: **\$0**Estimated Remaining Life (in years): **Unk**Total for ERL Unk (2 detail records) Low: **\$400** High: **\$900**

Total for Building 231 (56 detail records) Low: **\$698,900** High: **\$840,900**

234 Hamilton Middle / Van Hise Elementary SchoolEstimated Remaining Life (in years): **00**Total for ERL 00 (20 detail records) Low: **\$27,500** High: **\$42,550**Estimated Remaining Life (in years): **01**Total for ERL 01 (24 detail records) Low: **\$71,400** High: **\$113,500**Estimated Remaining Life (in years): **02**Total for ERL 02 (16 detail records) Low: **\$58,800** High: **\$89,900**Estimated Remaining Life (in years): **03**Total for ERL 03 (5 detail records) Low: **\$25,000** High: **\$32,000**Estimated Remaining Life (in years): **05**Total for ERL 05 (6 detail records) Low: **\$15,000** High: **\$23,000**Estimated Remaining Life (in years): **10**Total for ERL 10 (1 detail record) Low: **\$0** High: **\$100**Estimated Remaining Life (in years): **15**Total for ERL 15 (14 detail records) Low: **\$0** High: **\$1,400**Estimated Remaining Life (in years): **NA**

Total for ERL NA (5 detail records)	Low: \$7,000	High: \$12,000
Estimated Remaining Life (in years): Unk		
Total for ERL Unk (2 detail records)	Low: \$6,000	High: \$9,000
<hr/>		
Total for Building 234 (93 detail records)	Low: \$210,700	High: \$323,450

239 Wright Middle School

Estimated Remaining Life (in years): 00		
Total for ERL 00 (4 detail records)	Low: \$7,500	High: \$13,800
Estimated Remaining Life (in years): 01		
Total for ERL 01 (1 detail record)	Low: \$400	High: \$800
Estimated Remaining Life (in years): 15		
Total for ERL 15 (4 detail records)	Low: \$10,000	High: \$15,000
Estimated Remaining Life (in years): Unk		
Total for ERL Unk (4 detail records)	Low: \$3,500	High: \$5,200
<hr/>		
Total for Building 239 (13 detail records)	Low: \$21,400	High: \$34,800

242 Sennett Middle School

Estimated Remaining Life (in years): 00		
Total for ERL 00 (10 detail records)	Low: \$49,050	High: \$62,600
Estimated Remaining Life (in years): 01		
Total for ERL 01 (6 detail records)	Low: \$19,850	High: \$42,500
Estimated Remaining Life (in years): 02		
Total for ERL 02 (3 detail records)	Low: \$21,000	High: \$47,000
Estimated Remaining Life (in years): 03		
Total for ERL 03 (2 detail records)	Low: \$6,000	High: \$9,000
Estimated Remaining Life (in years): 05		
Total for ERL 05 (4 detail records)	Low: \$16,500	High: \$25,000
Estimated Remaining Life (in years): 10		
Total for ERL 10 (6 detail records)	Low: \$10,500	High: \$16,000
Estimated Remaining Life (in years): 15		
Total for ERL 15 (3 detail records)	Low: \$0	High: \$300
Estimated Remaining Life (in years): 20		
Total for ERL 20 (6 detail records)	Low: \$0	High: \$600
Estimated Remaining Life (in years): NA		
Total for ERL NA (1 detail record)	Low: \$0	High: \$0

Total for Building 242 (41 detail records)	Low: \$122,900	High: \$203,000
--	----------------	-----------------

245 Jefferson Middle School

Estimated Remaining Life (in years): **00**

Total for ERL 00 (10 detail records) Low: \$632,500 High: \$705,000

Estimated Remaining Life (in years): **01**

Total for ERL 01 (1 detail record) Low: \$2,000 High: \$3,000

Estimated Remaining Life (in years): **02**

Total for ERL 02 (4 detail records) Low: \$14,800 High: \$32,400

Estimated Remaining Life (in years): **03**

Total for ERL 03 (8 detail records) Low: \$128,500 High: \$162,000

Estimated Remaining Life (in years): **05**

Total for ERL 05 (20 detail records) Low: \$67,100 High: \$93,200

Estimated Remaining Life (in years): **10**

Total for ERL 10 (5 detail records) Low: \$6,200 High: \$9,400

Total for Building 245 (48 detail records)	Low: \$851,100	High: \$1,005,000
--	----------------	-------------------

301 Administration Building

Estimated Remaining Life (in years): **00**

Total for ERL 00 (16 detail records) Low: \$78,750 High: \$157,900

Estimated Remaining Life (in years): **01**

Total for ERL 01 (5 detail records) Low: \$11,800 High: \$17,400

Estimated Remaining Life (in years): **02**

Total for ERL 02 (15 detail records) Low: \$125,800 High: \$197,900

Estimated Remaining Life (in years): **03**

Total for ERL 03 (1 detail record) Low: \$2,000 High: \$3,000

Estimated Remaining Life (in years): **05**

Total for ERL 05 (5 detail records) Low: \$11,500 High: \$18,000

Estimated Remaining Life (in years): **10**

Total for ERL 10 (2 detail records) Low: \$100 High: \$200

Estimated Remaining Life (in years): **20**

Total for ERL 20 (17 detail records) Low: \$0 High: \$1,700

Estimated Remaining Life (in years): **NA**

Total for ERL NA (1 detail record) Low: \$0 High: \$0

Estimated Remaining Life (in years): **Unk**

Total for ERL Unk (2 detail records) Low: \$1,400 High: \$1,700

Total for Building 301 (64 detail records)	Low: \$231,350	High: \$397,800
--	----------------	-----------------

305 Building Services

Estimated Remaining Life (in years): **02**

Total for ERL 02 (1 detail record)	Low: \$220,000	High: \$240,000
------------------------------------	----------------	-----------------

Total for Building 305 (1 detail record)	Low: \$220,000	High: \$240,000
--	----------------	-----------------

307 Allied Drive

Estimated Remaining Life (in years): **00**

Total for ERL 00 (1 detail record)	Low: \$10,000	High: \$15,000
------------------------------------	---------------	----------------

Total for Building 307 (1 detail record)	Low: \$10,000	High: \$15,000
--	---------------	----------------

998 Lussier Stadium

Estimated Remaining Life (in years): **03**

Total for ERL 03 (1 detail record)	Low: \$75,000	High: \$100,000
------------------------------------	---------------	-----------------

Estimated Remaining Life (in years): **05**

Total for ERL 05 (1 detail record)	Low: \$5,000	High: \$10,000
------------------------------------	--------------	----------------

Total for Building 998 (2 detail records)	Low: \$80,000	High: \$110,000
---	---------------	-----------------

999 Mansfield Stadium

Estimated Remaining Life (in years): **02**

Total for ERL 02 (1 detail record)	Low: \$350,000	High: \$400,000
------------------------------------	----------------	-----------------

Estimated Remaining Life (in years): **05**

Total for ERL 05 (1 detail record)	Low: \$5,000	High: \$10,000
------------------------------------	--------------	----------------

Total for Building 999 (2 detail records)	Low: \$355,000	High: \$410,000
---	----------------	-----------------

Grand Total for All Buildings Listed	Low: \$56,174,335	High: \$78,392,135
--------------------------------------	-------------------	--------------------

Roofing

The 2009 MMSD District Wide Roof Evaluation and Asset Management Program were completed by SRI personnel using the latest technology available in roof asset management, the SRI Facman program. Data from the previous roof survey was uploaded into Facman and served as a baseline for the current evaluation. Out dated roof system information and roof sketch updates were completed. A roof condition evaluation was completed for all building roof sections using Facman's roof assessor tool. The roof assessor tool evaluates 10 roof performance factors and yields an overall roof condition score. This score is used within Facman to prioritize roof repair and replacement needs and generate roof rehabilitation cost projections. All roof asset inventory data and roof analysis report features are accessed through the internet by both MMSD personnel and SRI personnel, and form the basis for the MMSD Roof Asset Management Program.

District wide there are 3,018,671 sq. ft. of roof area not including Olson. Using a 25 year replacement cycle (Which is long) we would need to replace approximately 121,000 sq. ft. of roofing per year. The five year project list of roofing needs adjusts the Facman study to balance expenditures to approximately 121,000 square feet of roof replacements annually. This is approximately \$1,100,000 to \$1,300,000 annually to keep up with the roofing replacement schedule.

Roof Summary
Year 1

1/26/2010

Building	Roof Section Number	Roof Type/MFG	RAP	Estimated Remaining Service Life	Installed	Area (Sq. Ft)	Budget
Black Hawk Middle School/Gompers Elementary	R09	Roof. Modified Bitumen/Siplast	22	3-5 Years	8/3/1990	5,734	\$ 63,415
Crestwood Elementary School	R01	Roof. Modified Bitumen/GAF Materials Corp.	14	0-1 Year	6/30/1993	3,654	\$ 40,411
Crestwood Elementary School	R04	Roof. Modified Bitumen/Unknown	28	3-5 Years	8/30/1988	4,735	\$ 52,367
Crestwood Elementary School	R06	Roof. Modified Bitumen/Unknown	27	3-5 Years	8/30/1988	724	\$ 8,007
Crestwood Elementary School	R08	Roof. Built-up Asphalt/Soprema-Inc.	17	2-3 Years	8/30/1982	4,600	\$ 50,874
Crestwood Elementary School	R09	Roof. Modified Bitumen/GAF Materials Corp.	24	3-5 Years	6/30/1993	540	\$ 5,972
Memorial High School	R01	Roof. Ballasted Single-ply/Unknown	17	2-3 Years	8/30/1988	1,450	\$ 16,036
Memorial High School	R02	Roof. Ballasted Single-ply/Unknown	17	2-3 Years	8/30/1988	419	\$ 4,634
Memorial High School	R17	Roof. Modified Bitumen/Johns Manville International	16	2-3 Years	8/30/1988	3,663	\$ 40,511
Memorial High School	R18	Roof. Modified Bitumen/Johns Manville International	16	2-3 Years	8/30/1988	2,726	\$ 30,148
Memorial High School	R33	Roof. Modified Bitumen/Johns Manville International	16	2-3 Years	8/30/1987	1,811	\$ 20,029
Memorial High School	R37	Roof. Modified Bitumen/Johns Manville International	25	3-5 Years	8/30/1987	17,524	\$ 193,807
Stephens Elementary School	R01	Roof. Modified Bitumen/Johns Manville International	15	0-1 Year	8/30/1986	19,806	\$ 219,044
Stephens Elementary School	R02	Roof. Modified Bitumen/Johns Manville International	15	0-1 Year	8/30/1986	16,559	\$ 183,134
Stephens Elementary School	R03	Roof. Modified Bitumen/Johns Manville International	15	0-1 Year	8/30/1986	4,382	\$ 48,463
Stephens Elementary School	R04	Roof. Modified Bitumen/Johns Manville International	24	3-5 Years	8/30/1990	8,723	\$ 96,472
Toki Middle School/Orchard Ridge Elementary School	R11	Roof. Modified Bitumen/Johns Manville International	12	0-1 Year	8/1/1989	4,935	\$ 54,579
Toki Middle School/Orchard Ridge Elementary School	R16	Roof. Modified Bitumen/Unknown	17	2-3 Years	8/1/1975	1,611	\$ 17,817
Whitehorse Middle / Schenk Elementary	C02	Roof. Modified Bitumen/Siplast	15	0-1 Year	8/1/1989	50	\$ 553
Whitehorse Middle / Schenk Elementary	R14	Roof. Modified Bitumen/Siplast	15	0-1 Year	8/1/1989	13,183	\$ 145,797
Totals						116,829	\$ 1,292,070

Roof Summary
Year 2

1/26/2010

Building	Roof Section Number	Roof Type/MFG.	RAP	Estimated Remaining Service Life	Installed	Area (Sq. Ft)	Budget
East High School	PH01	Roof: Modified Bitumen/Siplast	39	5-10 Years	8/1/1995	1,228	13,732
East High School	PH03	Roof: Modified Bitumen/Schuller	28	3-5 Years	8/1/1996	830	9,281
East High School	PH04	Roof: Modified Bitumen/Schuller	23	3-5 Years	8/1/1996	830	9,281
East High School	R06	Roof: Modified Bitumen/Johns Manville International	25	3-5 Years	8/1/1994	3,937	44,026
East High School	R07	Roof: Modified Bitumen/Johns Manville International	25	3-5 Years	8/1/1994	5,372	60,072
East High School	R08	Roof: Modified Bitumen/Schuller.	25	3-5 Years	8/1/1995	2,323	25,977
East High School	R09	Roof: Modified Bitumen/Schuller	25	3-5 Years	8/1/1995	477	5,334
East High School	R10	Roof: Modified Bitumen/Schuller	25	3-5 Years	8/1/1995	1,832	20,486
East High School	R11	Roof: Modified Bitumen/Schuller	25	3-5 Years	8/1/1995	478	5,345
East High School	R15	Roof: Modified Bitumen/Schuller	25	3-5 Years	8/1/1995	317	3,545
East High School	R16	Roof: Modified Bitumen/Schuller	27	3-5 Years	8/1/1995	612	6,844
East High School	R20	Roof: Modified Bitumen/Schuller	25	3-5 Years	8/1/1995	1,646	18,406
East High School	R21	Roof: Modified Bitumen/Schuller	25	3-5 Years	8/1/1995	1,121	12,536
East High School	R22	Roof: Modified Bitumen/Schuller	25	3-5 Years	8/1/1995	1,774	19,838
East High School	R23	Roof: Modified Bitumen/Schuller	25	3-5 Years	8/1/1995	12,321	137,780
East High School	R25	Roof: Modified Bitumen/Schuller	25	3-5 Years	8/1/1995	1,325	14,817
East High School	R25B	Roof: Modified Bitumen/Schuller	25	3-5 Years	8/1/1995	273	3,053
East High School	R37	Roof: Modified Bitumen/Schuller	25	3-5 Years	8/1/1995	7,846	87,738
East High School	R38	Roof: Modified Bitumen/Schuller	25	3-5 Years	8/1/1995	529	5,916
Franklin Elementary School	R04	Roof: Modified Bitumen/Johns Manville International	19	2-3 Years	8/1/1991	2,949	32,977
Franklin Elementary School	R05	Roof: Modified Bitumen/Johns Manville International	19	2-3 Years	8/1/1991	4,336	48,487
Franklin Elementary School	R07	Roof: Architectural Metal/Unknown	29	3-5 Years	8/1/1975	149	2,999
Franklin Elementary School	R08	Roof: Architectural Metal/Unknown	30	3-5 Years	8/1/1975	137	2,758
Franklin Elementary School	R10	Roof: Architectural Metal/Unknown	30	3-5 Years	8/1/1975	95	1,912
Franklin Elementary School	R11	Roof: Modified Bitumen/Johns Manville International	17	2-3 Years	8/1/1988	229	2,561
Hamilton Middle / Van Hise Elementary	R12	Roof: Built-up Asphalt/GAF Materials Corp.	28	3-5 Years	8/1/1990	7,338	82,057
Hamilton Middle / Van Hise Elementary	R22	Roof: Built-up Asphalt/Johns Manville International	27	3-5 Years	8/1/1988	2,130	23,819
Hamilton Middle / Van Hise Elementary	R23	Roof: Built-up Asphalt/Johns Manville International	27	3-5 Years	8/1/1988	14,277	159,653
Hamilton Middle / Van Hise Elementary	R24	Roof: Built-up Asphalt/Johns Manville International	27	3-5 Years	8/1/1988	1,228	13,732
Hamilton Middle / Van Hise Elementary	R25	Roof: Built-up Asphalt/Johns Manville International	27	3-5 Years	8/1/1988	14,560	162,817
Mendota Elementary School	C01	Roof: Modified Bitumen/Tarmac	29	3-5 Years	8/1/1991	63	704
Mendota Elementary School	R08	Roof: Modified Bitumen/Tarmac	28	3-5 Years	8/29/1991	12,114	135,465
Mendota Elementary School	R09	Roof: Modified Bitumen/Tarmac	26	3-5 Years	8/29/1992	2,084	23,304
West High School	R01	Roof: Modified Bitumen/Johns Manville International	20	2-3 Years	8/1/1992	2,805	31,367
West High School	R02	Roof: Modified Bitumen/Johns Manville International	20	2-3 Years	8/1/1992	17,681	197,718
Totals						127,246	1,426,337

Roof Summary
Year 3

1/26/2010

Building	Roof Section Number	Roof Type/MFG	RAP	Estimated Remaining Service Life	Installed	Area (Sq. Ft)	Budget
Allis Elementary School	R02	Roof: Modified Bitumen/Siplast	30	3-5 Years	6/1/1985	6,031	\$ 68,075
Allis Elementary School	R04	Roof: Modified Bitumen/Siplast	30	3-5 Years	6/1/1985	2,899	\$ 32,722
Allis Elementary School	R05	Roof: Modified Bitumen/Siplast	30	3-5 Years	6/1/1985	2,010	\$ 22,688
Allis Elementary School	R06	Roof: Modified Bitumen/Siplast	30	3-5 Years	6/1/1985	4,510	\$ 50,907
Allis Elementary School	R07	Roof: Modified Bitumen/Siplast	30	3-5 Years	6/1/1985	5,973	\$ 67,420
Allis Elementary School	R08	Roof: Modified Bitumen/Siplast	30	3-5 Years	6/1/1985	3,602	\$ 40,658
Allis Elementary School	R09	Roof: Modified Bitumen/Siplast	30	3-5 Years	6/1/1985	7,390	\$ 83,415
Lapham Elementary School	R02	Roof: Modified Bitumen/Siplast	30	3-5 Years	7/3/1984	7,213	\$ 81,417
Lapham Elementary School	R04	Roof: Modified Bitumen/Unknown	25	3-5 Years	8/1/1983	1,128	\$ 12,732
Memorial High School	R09	Roof: Modified Bitumen/Johns Manville International	25	3-5 Years	8/30/1996	6,604	\$ 74,543
Memorial High School	R10	Roof: Modified Bitumen/Johns Manville International	25	3-5 Years	8/30/1996	1,103	\$ 12,450
Memorial High School	R11	Roof: Modified Bitumen/Johns Manville International	25	3-5 Years	8/30/1996	2,646	\$ 29,867
Memorial High School	R12	Roof: Modified Bitumen/Johns Manville International	25	3-5 Years	8/30/1996	1,772	\$ 20,001
Memorial High School	R13	Roof: Modified Bitumen/Johns Manville International	25	3-5 Years	8/30/1996	680	\$ 7,676
Memorial High School	R23	Roof: Modified Bitumen/Johns Manville International	26	3-5 Years	8/30/1992	500	\$ 5,644
Memorial High School	R24	Roof: Modified Bitumen/Johns Manville International	26	3-5 Years	8/30/1992	28,009	\$ 316,152
Memorial High School	R25	Roof: Modified Bitumen/Johns Manville International	26	3-5 Years	8/30/1992	3,124	\$ 35,262
Memorial High School	R26	Roof: Modified Bitumen/Johns Manville International	26	3-5 Years	8/30/1992	5,061	\$ 57,126
O Keeffe Middle School/Marquette Elementary School	R03	Roof: Modified Bitumen/Siplast	28	3-5 Years	10/7/1985	1,648	\$ 18,602
O Keeffe Middle School/Marquette Elementary School	R06	Roof: Modified Bitumen/Johns Manville International	30	3-5 Years	8/1/1994	7,091	\$ 80,040
Sherman Middle/Shabazz City High	R14	Roof: Modified Bitumen/Johns Manville International	22	3-5 Years	8/1/1994	5,662	\$ 63,910
Sherman Middle/Shabazz City High	R19	Roof: Modified Bitumen/Johns Manville International	22	3-5 Years	8/1/1996	13,216	\$ 149,176
Total						117,872	\$ 1,330,480

Roof Summary
Year 4

1/26/2010

Building	Roof Section Number	Roof Type/MFG.	RAP	Estimated Remaining Service Life	Installed	Area (Sq. Ft)	Budget
Black Hawk Middle School/Gompers Elementary	R15	Roof: Built-up Asphalt/GAF Materials Corp.	34	5-10 Years	8/1/1991	8,538	\$ 97,269
Black Hawk Middle School/Gompers Elementary	R16	Roof: Built-up Asphalt/GAF Materials Corp.	34	5-10 Years	8/1/1991	30,712	\$ 349,886
Black Hawk Middle School/Gompers Elementary	R18	Roof: Asphalt Shingle/Unknown	32	5-10 Years	8/1/1985	1,227	\$ 13,979
Lowell Elementary School	R01	Roof: Modified Bitumen/Siplast	28	3-5 Years	8/30/1985	795	\$ 9,057
Lowell Elementary School	R02	Roof: Modified Bitumen/Siplast	28	3-5 Years	8/30/1985	1,678	\$ 19,117
Lowell Elementary School	R03	Roof: Modified Bitumen/Siplast	28	3-5 Years	8/30/1985	2,934	\$ 33,426
Lowell Elementary School	R04	Roof: Modified Bitumen/Siplast	28	3-5 Years	8/30/1985	567	\$ 6,460
Lowell Elementary School	R05	Roof: Modified Bitumen/Siplast	28	3-5 Years	8/30/1985	799	\$ 9,103
Lowell Elementary School	R06	Roof: Modified Bitumen/Siplast	28	3-5 Years	8/30/1985	1,707	\$ 19,447
Lowell Elementary School	R12	Roof: Modified Bitumen/Siplast	28	3-5 Years	8/30/1985	14,560	\$ 165,875
Lowell Elementary School	R13	Roof: Modified Bitumen/Siplast	28	3-5 Years	8/30/1985	1,433	\$ 16,325
Lowell Elementary School	R14	Roof: Modified Bitumen/Siplast	28	3-5 Years	8/30/1985	1,071	\$ 12,201
Memorial High School	R04	Roof: Modified Bitumen/Tamko Roofing Products Inc.	30	3-5 Years	8/30/1995	19,961	\$ 227,406
Memorial High School	R21	Roof: Modified Bitumen/Tamko Roofing Products Inc.	35	5-10 Years	8/30/1995	16,007	\$ 182,360
Sherman Middle/Shabazz City High	C01	Roof: Built-up Coal Tar/Unknown	31	5-10 Years	8/1/1960	122	\$ 1,390
Sherman Middle/Shabazz City High	C02	Roof: Built-up Coal Tar/Unknown	31	5-10 Years	8/1/1960	128	\$ 1,458
Sherman Middle/Shabazz City High	R01	Roof: Mechanically Fastened Single-ply/Firestone Building Products Co.	28	3-5 Years	8/1/1996	8,931	\$ 113,139
Sherman Middle/Shabazz City High	R20	Roof: Built-up Asphalt/GAF Materials Corp.	38	5-10 Years	8/1/1991	7,013	\$ 79,896
Total						119,183	\$ 1,357,792

Roof Replacement Summary
Year 5

1/26/2010

Building	Roof Section Number	Roof Type/MFG	RAP	Estimated Remaining Service Life	Installed	Area (Sq. Ft)	Budget
Hawthorne Elementary School	R01	Roof: Built-up Asphalt/Unknown	29	3-5 Years	8/1/1987	5,624	\$ 64,662
Hawthorne Elementary School	R02	Roof: Built-up Asphalt/Unknown	29	3-5 Years	8/1/1987	22,443	\$ 258,038
Hawthorne Elementary School	R03	Roof: Built-up Asphalt/Unknown	29	3-5 Years	8/1/1987	1,940	\$ 22,305
Hawthorne Elementary School	R04	Roof: Built-up Asphalt/Unknown	29	3-5 Years	8/1/1987	4,833	\$ 55,567
Kennedy Elementary School	R01	Roof: Modified Bitumen/Siplast	30	3-5 Years	6/18/1987	6,131	\$ 70,491
Kennedy Elementary School	R03	Roof: Built-up Asphalt/Johns Manville International	30	3-5 Years	8/1/1991	4,530	\$ 52,084
Kennedy Elementary School	R04	Roof: Built-up Asphalt/Johns Manville International	30	3-5 Years	8/1/1991	4,701	\$ 54,050
Kennedy Elementary School	R06	Roof: Built-up Asphalt/Johns Manville International	30	3-5 Years	8/1/1991	1,323	\$ 15,211
Kennedy Elementary School	R07	Roof: Built-up Asphalt/Johns Manville International	30	3-5 Years	8/1/1991	7,823	\$ 89,945
Leopold Elementary School	R01	Roof: Modified Bitumen/Siplast	29	3-5 Years	9/17/1986	3,853	\$ 44,300
Leopold Elementary School	R05	Roof: Modified Bitumen/Siplast	29	3-5 Years	8/1/1990	2,454	\$ 28,215
Leopold Elementary School	R06	Roof: Modified Bitumen/Siplast	29	3-5 Years	8/1/1990	4,520	\$ 51,969
Muir Elementary School	R10	Roof: Modified Bitumen/Siplast	29	3-5 Years	8/30/1988	4,555	\$ 52,371
Muir Elementary School	R11	Roof: Modified Bitumen/Siplast	28	3-5 Years	8/30/1988	13,903	\$ 159,850
Muir Elementary School	R12	Roof: Modified Bitumen/Siplast	28	3-5 Years	8/30/1988	13,913	\$ 159,965
Muir Elementary School	R14	Roof: Modified Bitumen/Siplast	28	3-5 Years	8/30/1988	5,682	\$ 65,329
Muir Elementary School	R15	Roof: Modified Bitumen/Siplast	30	3-5 Years	8/30/1989	315	\$ 3,622
Muir Elementary School	R16	Roof: Modified Bitumen/Siplast	30	3-5 Years	8/30/1989	5,323	\$ 61,201
O Keeffe Middle School/Marquette Elementary School	R16	Roof: Modified Bitumen/Siplast	31	5-10 Years	10/17/1990	2,877	\$ 33,078
O Keeffe Middle School/Marquette Elementary School	R17	Roof: Modified Bitumen/Siplast	31	5-10 Years	8/1/1990	2,959	\$ 34,021
O Keeffe Middle School/Marquette Elementary School	R18	Roof: Modified Bitumen/Siplast	32	5-10 Years	8/1/1990	2,892	\$ 33,251
O Keeffe Middle School/Marquette Elementary School	R19	Roof: Modified Bitumen/Siplast	31	5-10 Years	8/1/1990	2,798	\$ 32,170
Totals						125,392	\$ 1,441,695

Pavement

In December of 2008, a condition study was conducted of parking lots and paved playgrounds. This study was conducted by Jenkins Survey and Design. Total paved playground repairs are \$552,518. Total parking lot repairs are \$2,100,021

Addressing only the worst paved surfaces, the "2"s and "3"s on Jenkins scale
~~would be \$818,951.~~

**PLAYGROUNDS
EXHIBIT 2 NEED
LISTING IN "NEED PRIORITY" ORDER * WITH COMMENTS**

Location	Rating	Treatment	Comments	Area (sq. ft.)	Treatment Cost	Estimate
Schenk Southwest	2	Abandoned	Abandoned	N/A	\$0.00	\$0.00
Allis Main	3	Reconstruct	Extensive cracking, heavy vegetation	35,491	\$2.62	\$92,986.42
Glendale	3	Reconstruct	Extensive cracking, heavy vegetation	33,225	\$2.62	\$87,049.50
Randall	3	Recycle or Overlay	Heavy vegetation	36,890	\$1.66	\$61,237.40
Mendota perimeter PG	3	Recycle or Overlay		20,370	\$1.66	\$33,814.20
Gompers	3	Recycle or Overlay		12,970	\$1.66	\$21,530.20
Schenk	3	Overlay	Extensive cracking	9,590	\$1.66	\$15,919.40
Sandburg	3	Recycle or Overlay	Heavy vegetation	7,300	\$1.66	\$12,118.00
Lapham	4	Recycle or Overlay	Poor drainage, heavy vegetation	16,800	\$1.66	\$27,888.00
Elvehjem Playground	4	Recycle or Overlay	Water puddle issue	13,300	\$1.66	\$22,078.00
Lakeview Main PG	4	Recycle or Overlay		12,445	\$1.66	\$20,658.70
Falk West Playground	4	Recycle or Overlay		12,000	\$1.66	\$19,920.00
Huegel	4	Recycle or Overlay		10,440	\$1.66	\$17,330.40
Muir	4	Recycle or Overlay		8,060	\$1.66	\$13,379.60
Shorewood Hills SE	4	Recycle or Overlay	Uneven pavement, heavy vegetation	3,385	\$1.66	\$5,619.10
Orchard Ridge	5	Spray Seal	Water puddle issue	21,335	\$0.59	\$13,587.65
Leopold Main PG	5	Spray Seal		14,610	\$0.59	\$8,619.90
Allis SE Perimeter	5	Spray Seal		7,800	\$0.59	\$4,602.00
Van Hise North	5	Spray Seal	Water puddle issue, Heavy vegetation	4,800	\$0.59	\$3,714.00
Stephens	6	Spray Seal	Damage at Dumpster	28,690	\$0.59	\$17,927.10
Thoreau	6	Spray Seal	Severely raveled	19,180	\$0.59	\$11,316.20
Van Hise South	6	Spray Seal	Vegetation	15,300	\$0.59	\$9,027.00
Lindberg North	6	Spray Seal	Water puddle issue	9,632	\$0.59	\$6,682.88
Spring Harbor	6	Spray Seal	Vegetation	7,700	\$0.59	\$4,543.00
Mendota Main PG	6	Spray Seal		7,220	\$0.59	\$4,259.80
Sennett Basketball	6	Spray Seal		4,700	\$0.59	\$2,773.00
Mendota small PG	6	Spray Seal		2,300	\$0.59	\$1,357.00
Leopold 2 nd	6	Spray Seal		2,256	\$0.59	\$1,331.04
Lakeview (near office)	6	Spray Seal		N/A	\$0.08	\$500.00
Schenk Basketball	6		INCLUDED IN SCHENK MAIN	INCLUDED		
Franklin	7	Routine Maintenance		25,900	\$0.08	\$2,072.00
Wright Middle	7	Routine Maintenance		19,825	\$0.08	\$1,586.00
Falk East Playground	7	Routine Maintenance		15,410	\$0.08	\$1,232.80
Sherman	7	Routine Maintenance	Vegetation	11,200	\$0.08	\$896.00
Toki Basketball	7	Routine Maintenance		8,100	\$0.08	\$648.00
Leopold 3 rd	7	Routine Maintenance		5,887	\$0.08	\$470.96
Sandburg Basketball	7	Routine Maintenance		4,400	\$0.08	\$352.00
Muir (newer)	7	Routine Maintenance		2,850	\$0.08	\$228.00
Cherokee	7	Routine Maintenance		1,045	\$0.08	\$83.60
Lowell	8	Routine Maintenance	Cracks need to be sealed	18,980	\$0.06	\$1,138.80
Elvehjem Basketball	8	Routine Maintenance		11,900	\$0.06	\$714.00
Shorewood Hills North	8	Routine Maintenance		5,450	\$0.06	\$327.00
Randall SE Corner	8		INCLUDED IN RANDALL MAIN	INCLUDED		
Chavez	9	No Maintenance Required		N/A	\$0.00	\$0.00
Crestwood	9	No Maintenance Required		21,935	\$0.00	\$0.00
Emmerson	9	No Maintenance Required		16,350	\$0.00	\$0.00
Hawthorne	9	No Maintenance Required		14,680	\$0.00	\$0.00
Kennedy	9	No Maintenance Required		29,785	\$0.00	\$0.00
Leopold 4th	9	No Maintenance Required		9,797	\$0.00	\$0.00
Lincoln	9	No Maintenance Required		22,847	\$0.00	\$0.00
Lindberg South	9	No Maintenance Required		9,632	\$0.00	\$0.00
Marquette	9	No Maintenance Required		7,900	\$0.00	\$0.00
Midvale	9	No Maintenance Required	Cracks need to be sealed	18,630	\$0.00	\$0.00
Shorewood Hills SW	9	No Maintenance Required		8,895	\$0.00	\$0.00
Hawthorne Basketball	9	No Maintenance Required		N/A		
Olson	10	No Maintenance Required		N/A	\$0.00	\$0.00
TOTAL						\$552,518.65

LOCATIONS WITHIN EACH RATING ARE FURTHER RANKED BY ESTIMATED COST.

Bolded and under lined **ESTIMATE** have an additional \$1,000 added to repair drainage or damage, which is not included in the typical repair estimates.

**PARKING LOTS
EXHIBIT 2 NEED
LISTING IN "NEED PRIORITY" ORDER WITH COMMENTS**

Yard	Location	Rating	Treatment	Comments	Area (sq. ft.)	Treatment Unit Cost	Repair Estimate	Upgrade Estimate	Total Cost
3	Gompers/Blackhawk Remote	2	Reconstruction	Poor drainage is accelerating deterioration	12,565	\$3.17	\$39,831	\$0	\$39,831
11	Schenk Elem.	2	Reconstruction		12,287	\$3.17	\$38,950	\$11,144	\$50,093
3	Glendale Driveway	3	Overlay or Recycle		10,372	\$1.66	\$17,218	\$0	\$17,218
6	Lapham Elem.	3	Overlay or Recycle		36,265	\$1.66	\$60,200	\$23,133	\$83,333
9	Memorial H.S. South of Main bldg.	3	Overlay or Recycle		129,200	\$1.66	\$214,472	\$48,010	\$262,482
14	White Horse Middle	3	Overlay or Recycle		16,824	\$1.66	\$27,928	\$13,412	\$41,340
2	East H.S. Main Lot	4	Overlay or Recycle		43,845	\$1.66	\$72,783	\$18,225	\$91,008
2	East H.S. Third Lot	4	Overlay or Recycle		13,146	\$1.66	\$21,822	\$18,225	\$40,047
5	Kennedy Elem.	4	Overlay or Recycle		11,088	\$1.66	\$18,406	\$10,544	\$28,950
5	La Follette East	4	Overlay or Recycle	2 Drain blockages are causing damage	115,932	\$1.66	\$192,447	\$34,975	\$227,422
5	LaFollette Drive & Loading Dock	4	Overlay or Recycle		22,576	\$1.66	\$37,476	\$0	\$37,476
5	LaFollette/Sennet North Lot	4	Overlay or Recycle		32,116	\$1.66	\$53,313	\$34,975	\$88,288
10	Randall Elem.	4	Overlay or Recycle	East 1/4 is oldest and used for this evaluation	7,957	\$1.66	\$13,209	\$8,979	\$22,187
12	Spring Harbor Middle North Lot	4	Overlay or Recycle		28,600	\$1.66	\$47,476	\$19,300	\$66,776
12	Spring Harbor Middle South Lot	4	Overlay or Recycle		11,100	\$1.66	\$18,426	\$10,550	\$28,976
14	Wright Middle - North Lane	4	Overlay or Recycle		7,150	\$1.66	\$11,869	\$8,575	\$20,444
1	Allis Elem.	5	Overlay or Recycle		16,888	\$1.66	\$28,034	\$13,444	\$41,478
4	Hamilton Middle Drive Waukesha	5	Double Seal or Slurry Seal		18,600	\$0.72	\$13,392	\$14,300	\$27,692
4	Hawthorne Elem. North	5	Double Seal or Slurry Seal		19,457	\$0.72	\$14,009	\$14,729	\$28,738
6	Lakeview Elem. Driveway	5	Double Seal or Slurry Seal	Damage at Dumpster	4,900	\$0.72	\$3,528	\$7,150	\$10,678
8	Marquette Elem. North	5	Double Seal or Slurry Seal		10,092	\$0.72	\$7,266	\$10,046	\$17,312
9	Mendota South Lot	5	Double Seal or Slurry Seal		15,253	\$0.72	\$10,982	\$7,627	\$18,609
10	Mulr Elem.	5	Double Seal or Slurry Seal		24,834	\$0.72	\$17,880	\$17,417	\$35,297
11	Shabazz H.S. North Half	5	Double Seal or Slurry Seal		16,214	\$0.72	\$11,674	\$13,107	\$24,781
14	Wright Middle- Middle & South Lots	5	Double Seal or Slurry Seal		22,000	\$0.72	\$15,840	\$16,000	\$31,840
4	Hamilton Middle	5.5	Double Seal or Slurry Seal		9,000	\$0.72	\$6,480	\$9,500	\$15,980
2	East H.S. Secondary Lot	6	Double Seal or Slurry Seal		12,340	\$0.72	\$8,865	\$18,225	\$27,110
2	Falk Elem.	6	Double Seal or Slurry Seal	Needs Joint Maintenance	27,560	\$0.72	\$19,843	\$18,780	\$38,623
2	Franklin Elem.	6	Double Seal or Slurry Seal	Needs Center Joint Maintenance	9,004	\$0.72	\$6,483	\$8,001	\$14,484
3	Glendale Elem.	6	Double Seal or Slurry Seal		16,050	\$0.72	\$11,556	\$13,025	\$24,581
6	Lakeview Elem.	6	Double Seal or Slurry Seal		11,693	\$0.72	\$8,419	\$10,847	\$19,265
6	Leopold Elem. West Lot	6	Double Seal or Slurry Seal		36,265	\$0.72	\$26,111	\$23,133	\$49,243
7	Lowell Elem.	6	Double Seal or Slurry Seal		7,219	\$0.72	\$5,198	\$8,610	\$13,807
8	Maintenance/Food Build East Drive	6	Double Seal or Slurry Seal	Drain blockage is deteriorating pavement	27,027	\$0.72	\$20,459	\$18,514	\$38,973
9	Memorial H.S. East Driveway	6	Double Seal or Slurry Seal		65,600	\$0.72	\$47,232	\$0	\$47,232
9	Memorial H.S. East of Baseball Field	6	Double Seal or Slurry Seal		126,680	\$0.72	\$91,210	\$48,010	\$139,220
9	Memorial H.S. West of Football Field	6	Double Seal or Slurry Seal		28,241	\$0.72	\$20,334	\$48,010	\$68,344
9	Memorial H.S. North Lot	6	Double Seal or Slurry Seal	Severe damage at dumpster	5,216	\$0.72	\$4,756	\$7,608	\$12,364
9	Randall Elem. Middle Lot	6	Double Seal or Slurry Seal		6,264	\$0.72	\$4,510	\$8,132	\$12,642
13	Thoreau Elem.	6	Double Seal or Slurry Seal		5,979	\$0.72	\$4,305	\$7,990	\$12,294
14	Van Hise Elem.	6	Double Seal or Slurry Seal		19,260	\$0.72	\$13,867	\$14,630	\$28,497
1	Cherokee Middle	7	Routine Maintenance		23,865	\$0.08	\$1,909	\$0	\$1,909
2	Elvehjem Elem.	7	Routine Maintenance		22,000	\$0.08	\$1,760	\$0	\$1,760
4	Hamilton Middle	7	Routine Maintenance		9,030	\$0.08	\$722	\$0	\$722
5	Huegel Elem.	7	Routine Maintenance		16,535	\$0.08	\$1,323	\$0	\$1,323
5	La Follette East Expansion	7	Routine Maintenance		75,721	\$0.08	\$6,058	\$34,975	\$41,033
5	LaFollette/Sennet West Lot	7	Routine Maintenance	Center Joint needs to be filled	69,400	\$0.08	\$4,272	\$34,975	\$39,247
7	Lindberg Elem.	7	Routine Maintenance	Center Joint needs to be filled	10,972	\$0.08	\$878	\$0	\$878
8	Maintenance/Food Build	7	Routine Maintenance		31,749	\$0.08	\$2,540	\$0	\$2,540
9	Memorial H.S. West of Fieldhouse	7	Routine Maintenance		59,962	\$0.08	\$4,797	\$48,010	\$52,807
11	Shabazz H.S. South Half	7	Routine Maintenance		28,814	\$0.08	\$2,305	\$0	\$2,305
12	Sherman Middle	7	Routine Maintenance		11,465	\$0.08	\$917	\$0	\$917
12	Shorewood Hills Elem.	7	Routine Maintenance		13,368	\$0.08	\$1,069	\$0	\$1,069
1	Administration Building	8	Routine Maintenance		58,888	\$0.06	\$3,533	\$0	\$3,533
1	Crestwood East Lot	8	Routine Maintenance		19,789	\$0.06	\$1,187	\$0	\$1,187
1	Crestwood West Lot	8	Routine Maintenance		11,891	\$0.06	\$713	\$0	\$713
3	Gompers/Blackhawk Main	8	Routine Maintenance		29,242	\$0.06	\$1,755	\$0	\$1,755
3	Maintenance Build	8	Routine Maintenance		20,426	\$0.06	\$1,226	\$0	\$1,226
2	Maintenance Build West Drive	8	Routine Maintenance	Drain blockage is deteriorating pavement	13,220	\$0.06	\$1,793	\$0	\$1,793
12	Shorewood Hills Elem. Drive	8	Routine Maintenance		4,379	\$0.06	\$263	\$0	\$263
12	Stephens Elem.	8	Routine Maintenance		17,535	\$0.06	\$1,052	\$0	\$1,052
4	Hoyt Center	8.5	Routine Maintenance	Damage at Dumpster	6,106	\$0.00	\$1,000	\$0	\$1,000
1	Chavez Elem NW	9	No Maintenance Required		N/A	\$0.00	\$0	\$0	\$0
1	Chavez Elem SE	9	No Maintenance Required		N/A	\$0.00	\$0	\$0	\$0
2	Emmerson Elem.	9	No Maintenance Required		15,856	\$0.00	\$0	\$0	\$0
4	Hawthorne Elem. South	9	No Maintenance Required		26,502	\$0.00	\$0	\$0	\$0
6	Leopold Elem. Drive	9	No Maintenance Required		23,905	\$0.00	\$0	\$0	\$0
7	Lincoln Elem.	9	No Maintenance Required		12,109	\$0.00	\$0	\$0	\$0
8	Maintenance Build South Lot	9	No Maintenance Required		14,122	\$0.00	\$0	\$0	\$0
8	Marquette Elem. South	9	No Maintenance Required		5,910	\$0.00	\$0	\$0	\$0
10	Midvale Elem.	9	No Maintenance Required		8,606	\$0.00	\$0	\$0	\$0
11	Sandburg Elem.	9	No Maintenance Required		16,346	\$0.00	\$0	\$0	\$0
13	Toki Middle	9	No Maintenance Required		35,470	\$0.00	\$0	\$0	\$0
14	West H.S.	9	No Maintenance Required		34,215	\$0.00	\$0	\$0	\$0
14	Wright Middle- New Repair	9	No Maintenance Required		48,400	\$0.00	\$0	\$0	\$0
9	Memorial - Jefferson	10	No Maintenance Required		N/A	\$0.00	\$0	\$0	\$0
10	Olson	10	No Maintenance Required		N/A	\$0	\$0	\$0	\$0
							\$1,348,718	\$754,837	\$2,103,555

Ases were previously made and repairs follow the recorded plan. In the city, the UPGRADE ESTIMATE is not required. If any changes have or will be made, all the parking lots on the site will need to be upgraded and recorded.

Bolded and under lined REPAIR ESTIMATES have an additional \$1,000 added to repair drainage or damage, which is not included in the typical repair estimates.

PLAYGROUNDS

3 - \$324,655.12

4 - \$127,873.80

5 - \$30,523.55

6 - \$59,717.02

7 - \$7,569.36

8 - \$2,179.80

TOTAL \$552,518.65

PARKING LOTS

2 - \$89,924.00

3 - \$404,372.00

4 - \$651,574.00

5 - \$235,993.00

5.5 - \$15,980.00

6 - \$546,679.00

7 - \$146,510.00

8 - \$7,989.00

8.5 - \$1,000.00

TOTAL \$2,100,021.00

Playgrounds

In September of 2007, MMSD hired Site Masters to conduct a district wide playground inspection. This study identified many "Type 1" safety violations according to the Playground Safety Standards as published by the National Playground Safety Institute.

~~The estimate to correct all these "Type 1" safety violations is \$499,046.~~

POINTS	CONDITION LIKELY TO CAUSE:
1	Permanent disability, loss of life or body part - condition should be corrected immediately.
2	Serious injury resulting in temporary disability condition should be corrected as soon as possible.
3	Minor (non-disabling) injury, condition should be corrected.
4	Potential for injury very minimal, however, current condition should be eventually corrected.
5	Condition is compliant and does not present a hazard at this time, continued ongoing preventive maintenance is recommended.

The table is a sample of the hazard classification rating system that was developed by Site Masters as a means to evaluate the total hazard potential for each item of play equipment. The rating noted for each question on the audit form reflects the professional opinion of Site Masters, Inc. based on their observation of the component being evaluated during the inspection.

Each question relates to a specific section of the ASTM Standard or the CPSC Handbook. The related section is found at the end of the question in parenthesis. A citation from CPSC always is designated as such. The "Yes" column to the right of the question or statement has a point total of 5. This represents the maximum point value for that question meaning that the condition of the equipment or surfacing is compliant with that question or statement. During the audit of the playground the questions are considered and answered. The rating column (Rtg) indicates whether or not the condition being evaluated complied with the question being asked. A rating of "5" means the condition is compliant with the standards and guidelines and no hazard was present at the time of inspection. The rating column ("Rtg") also represents the potential for serious injury as a result of a non-compliant condition. A non compliant condition is given a rating of 1-4. A rating of "1" indicates that a non-compliant condition exists that has the potential to cause a life threatening or permanently disabling injury. A condition with a priority rating of "1" would necessitate either closing the playground or taking the item out of service until the condition is corrected or the component is removed. Priority "1" conditions are highlighted in Red on the audit report forms for each school.

At the end of each Item's audit form the point columns are totaled. The total points for the "Yes" column represents the maximum number of points that may be applied to that item if the item is totally compliant with the standards and guidelines. The total in the "Rtg" column represents the actual number of points that were applied to that item. The lower the number in this column the greater the level of hazard. In order to rate the condition of one item of play equipment against another the "Rtg" point total is divided by the "Yes" point total resulting in a percentile rating for the item. Each school audit begins with an inventory of the items that were present in the playground environment. The total percentile rating is given for each item that was evaluated during the audit. Site amenities, athletic equipment and fencing are not considered playground equipment and were not evaluated in the

audit. At the end of this section is a "Total Ranking" page that summarizes all of the schools in the district on a spread sheet showing the ranking of the playgrounds from the most hazardous and least compliant to the best condition or most compliant.

Sample Surfacing Form

Protective Surface & Use Zones (Our Item # 2)

Location: **South Center** Description: **Designed Surface Areas, Composite Structure, Slide, Swing, Fitness Cluster**
 Manufacturer: **na** Fall Ht.: **102 in.** Surface Type(s): **Pea Stone** Depth(s): **3 – 8 in.**

Protective Surface & Use Zones	Yes	Rtg	Comments and Remediation
Use Zone dimensions and configuration are appropriate for equipment type (9.1.1)	5	2	Swing Set area: Swing is designed to be 8' high top rail. Lack of surfacing results in borders too close. Add surfacing. Fitness Area; Instructional Signs are within use zone - relocate. At Composite Structure's transfer platform the borders are within the use zone -- relocate borders.
Surfacing is consistent with CPSC recommendations (CPSC section 4, ASTM F1292)	5	3	
Critical height of surfacing ≥ fall height of equipment (CPSC section 4.2)	5	1	Consider different protective surfacing for impact attenuation for these equipment heights
Thickness of material is consistent throughout (CPSC appendix C)	5	3	Varies from 3 in. in Fitness Cluster area to 8 in. under Spiral Slide. No surfacing under swing seats. Add Rake and Level surfacing
Free Draining and no standing water (CPSC appendix C)	5	3	
Areas are raked and leveled (CPSC appendix C)	5	3	
Foreign materials removed from materials (raking, sweeping) (CPSC appendix C)	5	4	
Gravel may require periodic break up and removal of hardpan (CPSC appendix C)	5	4	Hard pan under swing seats and in Fitness Area
Wear Pads provided at high impact areas	5	4	Swing Set under HC seat only
Border material and/or wear pads does not create tripping hazard (CPSC appendix C)	5	1	Exposed concrete at rubber wear pads under swing set. Add surfacing to level or above rubber padding. Plastic Borders need to be re-align, repaired where necessary and steel anchors driven level with or below border surface.
Surfacing material type is generally considered accessible (ASTM F1951)	5	2	
Totals	55	30	Rating: 54.5

Audit Uses

The results of this audit may be used for a variety of purposes:

1. The most important would be to identify any equipment or conditions that could result in serious injury.
2. The school district may use the hazard analysis to prepare long range goals of comprehensive repair and replacement. The schedule would allow the district to make sound decisions on where to best spend available funds to eliminate their most serious playground hazards.
3. This audit identifies manufacturers where possible. When modifications are indicated the manufacturer should be contacted when possible for guidance in making the modifications.
4. This audit may be used as a legal defense tool if a suit is brought against the district arising from equipment that does not meet current safety guidelines. It may not be possible to correct all of the conditions noted immediately. This audit may be used to show that the district has acted immediately to remove and correct the most serious hazards. It will also show that the district is acting in good faith to correct all problems in a systematic manner as funding becomes available.

The school district should establish a written policy relating to this audit outlining the steps and time table for meeting the recommendations of the audit. Failure to follow through on the audit results will render this defense to be ineffective and could be used to prove negligence.

5. The school district may also use the comments and recommendations in this audit as the basis for establishing a district policy relating to the purchase and installation of new playground equipment. It is recommended that such a policy be established.

Implementation of the Audit

The checklist that is used to evaluate the play area, surfacing and equipment is a compilation of the recommendations of the Consumer Product Safety Commission Guidelines (revised 1997) and the ASTM F1487-07 Standard for Public Equipment and the ASTM F1292 Standard for Playground Surfacing . These are only guidelines and are not a mandatory requirement. To date, there are no federal laws relating to the design and safety of play equipment. It is believed that at the present time Wisconsin does not have any State laws relating to the playground environment.

This audit identifies equipment, conditions and components that do not comply with the recommendations of the Consumer Product Safety Commission Guidelines and the ASTM. Once the conditions are identified, the district is faced with a dilemma in their attempt to meet the current safety guidelines. It is necessary to establish a policy outlining how hazards will be dealt with. It is critical to remove or correct any hazards on the existing equipment that are known to cause serious injuries or death. Such hazards would be noted in the audit as a #1 or #2 priority.

Any item that was assigned an rating of 1 or 2 should be removed or refurbished immediately. Use zones should be expanded and the protective surfacing issues noted in the report should be brought into compliance immediately. All recommended maintenance that will remove a hazard that is rated 1 or 2 on the individual equipment audits should be performed immediately. Forty percent of all accidents on playgrounds can be directly related to poor maintenance. Therefore it is very important that the existing maintenance program be evaluated for its effectiveness. This is especially important relating to the maintenance of surfacing material.

Once the most hazardous conditions have been addressed the district can implement a systematic approach to retrofitting or removing other play components that do not comply with the recommendations of the CPSC and the ASTM. The success of the implementation of this program will depend on the ongoing commitment of each and every person that is actively involved in providing a safe and challenging educational environment for the children of the Madison Metropolitan School District. Without this commitment your risk management and loss containment program cannot reach its full potential.

Playground Site Survey – Elementary School Averages & Priority 1

Madison Metropolitan School District

Dates of Inspection: July 19 to August 1, 2007

4711 Pflaum Rd • Madison, WI 53718

Inspected by: Site Masters Inc.

School	Average of all Items	Item #	Priority #1 Description
Allied Learning Center	81.50	-0-	None
Allis Elementary	84.00	6	Climber Round A. Bout
		7	Slide – Free Standing
		12	Swing Set – Tri Pod South
Chavez Elementary	92.40	2	Protective Surfacing
		4	Composite Structure – Large East
Crestwood Elementary	92.47	3	Composite Structure – Upper – Fire
		6	General Environment – Lower
		8	Composite Structure – Lower
Elvehjem Elementary	86.38	2	Protective Surfacing – East
		4	Swing Set – Arch
		9	Protective Surfacing – North (Center)
		11	Swing Set North (Center)
Emerson Elementary	78.23	7	Composite Play Structure N. East
		8	Composite Play Structure N. East (west edge)
		12	Fitness Center
		13	Protective Surfacing – S. East
Falk Elementary	85.25	5	Swing Set
		10	Protective Surfacing
		11	Composite Play Structure

Franklin	86.98		2	Protective Surfacing
			3	Composite Play Structure West at Wall
Glendale Elementary	80.68		2	Protective Surfacing
			3	Free Standing Spiral Slide
			7	Protective Surfacing-- Fitness Area
			8	Horizontal Ladder
			9	Octagonal Climber
			10	Overhead Ladder
			11	Chin Up Bar 3 Level
			12	Vertical Box Climber
			13	Arch Climber
			14	Chin Up Bars 5 Level
			15	Turnings Bars 2 each
			16	Box Climber w/Horizontal Ladder
Gompers Elementary	83.96		3	Composite Play Structure
			8	Protective Surfacing
			10	Composite Play Structure
			11	Swing Set
Hawthorn Elementary	92.46		6	Protective Surfacing
			7	Composite Play Structure --West
Huegel Elementary	87.64		2	Protective Surfacing
Kennedy Elementary	86.44		4	Composite Play Structure - Center
			5	Composite Play Structure North
Lakeview Elementary	83.12		4	Composite Play Structure -- Center
			7	Protective Surfacing Upper
			8	Round A Bout
			9	Gym/Fitness Center

Lapham Elementary	88.22		2	Protective Surfacing
			3	Composite Play Structure – Northwest
			4	Composite Play Structure – Southwest
Leopold Elementary School	89.40		9	Round-a-Bout
Lincoln Elementary School	91.00		3	Composite Play Structure
Lindbergh Elementary School	85.23		2	Protective Surfacing
			3	Composite Play Structure
			10	Protective Surfacing
			11	Composite Play Structure
			16	Ø Ring Horizontal Ladder
Lowell Elementary School	93.23		2	Protective Surfacing
Marquette Elementary School	88.81		2	Protective Surfacing
			3	Composite Play Structure
			5	Chain Wall
			6	Chin up Bar
			9	Tire Swing
Mendota Elementary School	81.80		2	Protective Surfacing
			3	Composite Play Structure
			10	Protective Surfacing
			11	Composite Play Structure
			13	Swing Set
Midvale Elementary School	86.72		3	Composite Play Structure – Northwest
			4	Composite Play Structure – Southwest
Muir Elementary School	90.59		4	Composite Play Structure – West
			5	Composite Play Structure - Southwest
			6	Composite Play Structure – Southeast

Orchard Ridge Elementary School	86.48		2	Protective Surfacing
			4	Composite Play Structure – Southeast
			10	Concrete Pipe
Randall Elementary School	90.68		2	Protective Surfacing
			3	Composite Play Structure
Sandburg Elementary School	86.42		2	Protective Surfacing
			4	Composite Play Structure – West Edge
			9	Glover Climber
			13	Protective Surfacing
			14	Composite Play Structure
			17	Swing Set – Tri Pod End
Schenk Elementary School	83.44		2	Protective Surfacing
			3	Composite Play Structure – North
			4	Composite Play Structure – South
			6	Chin Up Bar – 1 Level
			7	Chin Up Bar – 3 Level
			8	Circle Climber – North
			9	Circle Climber – South
Shorewood Elementary	84.65		2	Protective Surfacing – North Side
			3	Composite Structure – North Side
			13	Protective Surfacing – South Side
			14	Composite Structure – South Side
Stephens Elementary School	90.16		2	Protective Surfacing
			7	Chin Up Bar/Panel
Thoreau Elementary School	85.75		0	None

VanHise - Hamiltonn Elementary School	90.52		2	Protective Surfacing
			3	Composite Play Structure – North
			5	Swing Set
			7	Tire Swing – East
			8	Tire Swing – West
			15	Dino – North
			16	Dino – South
			17	4 Way Spring Rider



Gerber Leisure Products Inc.

P.O. Box 42, Mount Horeb, WI 53572 * 800-236-7758 * E-mail play@gerberleisure.com * FAX 800-909-5059

July 1, 2009

Doug Pearson
Madison Metro School District
4711 Pflaum Rd.
Madison, WI 53704

Dear Doug,

Following is the updated pricing for replacement/repairing of the priority 1 safety violations for all the schools listed in the evaluation report done in 2007.

The costs listed are similar to the original costs from the December 19, 2007 estimate. Once again services not included are the removal of and installation of any replacement rubber tiles, or removal of or installation of any resilient surfacing.

The costs assume the reuse of existing surfacing from the old structures to the new. If excavation and removal of old surfacing is required, there would be an additional cost of \$1.00/sq. ft. to remove the old surfacing from the premises.

The additional cost for resilient surfacing is \$22.50/cu. yd delivered for 100 cubic yards. Smaller amounts would cost slightly more per cubic yard delivered. Installation for the new surfacing is approximately \$4.00/cu yd.

You will see for Emerson and Franklin Elementary there are two new options that include some newer style equipment. The original replacement equipment is still shown with current pricing as an option. Some newer components were added to the Crestwood plan. The original cost stated for Gompers' replacement structure was only for Phase 2 not for phase 2 and 3. It was required only as phase 2.

As listed originally, this is only an estimate for work and materials to be supplied in 2008 based on the report. Pricing for actual work can only be quoted/verified after visiting the actual sites and reviewing the area where the work will be completed.

Each school from the report and the priority 1 replacements recommended are listed below with the associated estimated costs. Diagrams of the replacement structures are included directly after the page listing the costs for that structure.

Chavez Elementary

62 - TuffTurf Rubber Tiles	\$83.00 each	Material only	\$5,146.00
1- Exit Plate for Ramp		material only	\$ 239.00
1- Double Wave Slide Bedway		material only	\$ 967.00

Crestwood Elementary

Burned Structure and Surfacing replacement	Completed 2007
Structure #8 Replacement (see diagram on following page) new components added	\$25,880.00
Remove old structure and reinstall new	\$ 7,200.00

(No additional excavating/site prep or surfacing is included in the installation cost. Reuse of existing surfacing is assumed)

Elvehjem Elementary

Protective surfacing, East under Arch Swing	Completed 2007
Swing Hanger fixed with installation of access pathway and rubber tiles	Completed 2007

Protective Surfacing for remainder as described	100 cu. yds	\$2,250.00
---	-------------	------------

Fix bolts – at time of other work	\$ 112.00
-----------------------------------	-----------

Emerson Elementary

Structure # 7 replacement (see diagram on following pages) (Components shown in green are newer and can be reused on the new structure)	\$29,080.00
Removal of old structure and installation of new structure	\$ 8,500.00

Structure # 8 replacement (see diagram on following pages) (Components shown in green are newer and can be reused on the new structure)	\$42,500.00
Removal of old structure and installation of new structure	\$ 3,325.00

Alternate Option for one structure to replace both at Emerson

EVOS /Playbooster combination (see diagram)	Cost Delivered	\$43,530.00
Removal of old structures and installation of new structures (EVOS/PlayB)		\$11,750.00
Area for this combination is 2830 ft sq 100 cu yds surfacing		

Replace bolts with round heads at time of other work on site	\$ 280.00
--	-----------

4- TuffTurf Rubber Tiles –Material only	\$ 335.00
---	-----------

Falk Elementary

Replace bolts with round heads and trim bolt threads on swings (at time of other work)	\$ 167.00
--	-----------

Protective Surfacing supplied not installed 100 cubic yards	\$ 2,250.00
---	-------------

Tighten bridge space on Burke Structure (at time of other work)	\$ 165.00
---	-----------

Franklin Elementary

Hard surface to stay – replace wood fiber surfacing instead 200 cu. yds.	\$ 4,500.00
--	------------------------

Repair Poured-In-Place Rubber	\$ 2,250.00
-------------------------------	------------------------

Structure #3 replacement (see diagram on following pages)	\$26,640.00
---	-------------

Removal of old structure and installation of new structure	\$ 7,040.00
--	-------------

No asphalt removal is included

Franklin Elementary continued

Alternate Option for one Spacenet structure to replace one Playbooster at Franklin

Spacenet with Spacelink to deck/transfer, and other climbers Cost Delivered ~~\$25,345.00~~
Removal of old structures and installation of new structure (SpacenetPlayB) ~~\$ 6,900.00~~
Area for this combination is 1925/ ft sq 90 cu. yds surfacing @23.50/cu yd

Gompers Elementary

Swing for BlackHawk Middle School w/ surfacing Completed 2007

Structure #3 replacement (see diagram on following pages) \$23,550.00
Plan includes the design from a phased project that was started by the PTO
1st phase is completed w/ swings, seesaw and block climber with some site prep for future phase
Price listed is for Phase 2 shown in black

~~Removal of old structure and installation of new structure both phases \$ 5,800.00~~

Structure #10 replacement North side of school (see diagram on following pages) \$17,750.00
Removal of old structure and installation of new structure \$ 4,775.00

Hawthorne Elementary

Protective surfacing – 6" of wood fiber over existing pea gravel w/ landscape fabric separating layers (materials only) completed 2009
Replace El Tunnel Slide, 56" high - \$ 2,268.00
Installation of slide \$ 650.00

Huegel Elementary

Protective Surfacing – wood fiber 100 cubic yards materials only \$ 2,250.00
35 – TuffTurf Rubber Tiles materials only \$ 2,905.00

Kennedy Elementary

Structure #4 replacement Clatterbridge, Hood on Slide, Banister w/ Firepole, Chain Ladder with Wiggle Ladder \$ 4,440.00
Removal of old parts and installation of new \$ 1,000.00

Structure #5 replace Horizontal ladder post, chain ladder w/ Wiggle Ladder, Banister w/ firepole \$ 1,170.00
Remove old parts and install new \$ 390.00

Check protrusions – Switch out bolts (at time of other work) \$ 500.00

Lakeview Elementary

Structure #4 replacement Option 1. Phase 1 (see diagram on following pages) completed 2008
This was an option that was requested by one of the parents on the PTO to be built
With possible donor money. This was to replace structure #4, fitness structure and
Round About Climber. They had planned for 3 possible phases. This is phase 1.
Removal of old structures and installation of new structure

Or

Structure #4 replacement to match original structure(see diagram)	\$12,200.00
Remove #4, Fitness Climber and Roundabout , install new structure	\$ 3,050.00
Protective Surfacing – wood fiber 140 yards for throughout the playground (material only)	\$ 2,870.00

Lapham Elementary

Move border and Equipment too close to border (done when other work is done) ~~\$ 800.00~~

Structure #3 parts replacement

Replace Spyroslide, Remove Horiz. Ladder to make independent and add two posts,
Replace chain ladder, replace Banister Slide with Firepole ~~\$ 5,225.00~~

Remove old equipment, replace with new, make horiz. Ladder independent
Move Bubble Panel down to close entrapment space ~~\$ 1,330.00~~

Or

or

Structure #3 replacement (see diagram on following pages) \$26,970.00
Removal of old structure and installation of new structure \$ 7,200.00

Bridge plank replacement – Contact Playworld for price, covered under warranty? (DEMO) \$ 500.00

Leopold Elementary

Replace Round-About Climber with Skyrail Climber new equip. quoted
Remove old climber , replace with new 2009
(to do with other work in the area)

Lincoln Elementary

Add new Double Slide Hood to eliminate entrapment space \$ 475.00

S horizontal bolts, change to round head, install double slide hood,
Tighten bridge plank (at time of other work in area) \$ 390.00

Lindbergh Elementary

11 TuffTurf Rubber Tiles (materials only)	\$ 913.00
Protective Surfacing –wood fiber 200 cubic yards for entire area @ 6" deep Over existing pea gravel with fabric between layers (materials only)	\$ 4,500.00
Structure #11 replacement (see diagram on following pages)	\$32,875.00
Removal of old structure and installation of new structure Also remove O Ring	\$ 8,875.00

Lowell Elementary

13 TuffTurf Tiles materials only	\$ 1,080.00
----------------------------------	-------------

Marquette Elementary

12 TuffTurf Tiles under Tire Swing materials only	\$ 996.00
11 TuffTurf Tiles under structure materials only	\$ 913.00
Protective Surfacing – wood fiber 140 cu. Yds @ 6" deep	\$ 2,870.00
(Sent Offset hanger clamp replacement for broken piece and pipe bolt for Spyroslide to Gary Larson)	

Mendota Elementary

Protective Surfacing – 200 cubic yards wood fiber	\$ 4,500.00
Structure #3 replacement (see diagram on following pages)	\$35,070.00
Removal of old structure and installation of new structure	\$ 9,465.00
Replacement Bolts must be acquired from Gametime	
Structure #12 replacement (see diagram on following pages)Playsense #32	\$ 3,905.00
Removal of old structure and installation of new structure	\$ 1,190.00
Trim and replace swing bolts (at time of other site work)	\$ 200.00

Midvale Elementary

Replace 2 Pipe Walls, replace slide with Double Wave Slide w/hood –materials	\$ 2,500.00
Remove old equipment and install new	\$ 775.00
Structure #4 Chain ladder replaced in 2007 by district	
Lower Slide Rails (done with other work on site)	\$ 100.00

Muir Elementary

Structure #3 replacement (see diagram on following pages)	\$14,365.00
Removal of old structure and installation of new structure	\$ 3,880.00
Structure #5 replacement (see diagram on following pages)	\$32,635.00
Removal of old structure and installation of new structure	\$ 8,650.00

(Does not include reconstruction of retaining wall if needed)

Replace Gametime Slide - must get pricing from Gametime

Orchard Ridge Elementary

Protective Surfacing – wood fiber 100 cubic yards \$ 2,250.00

New Border – TuffTimber Plastic, 4' long, for large play area only
Materials, removal of old border and installation of new completed 2008

Structure #4
Replace Banister Slide with Firepole, Replace damaged Loop Arch,
Replace deck to ground vertical ladder, replace deck to deck panel ladder, \$ 2,700.00
New chain for Chain Walk – materials only

Remove old equipment, install new parts, tighten clatterbridge with possible chain
Replacement, move Spyroslide rails and close entrapment with clamps \$ 1,920.00

Remove Concrete Pipes School District

Randall Elementary

6 TuffTurf Rubber Tiles to cover concrete pad or to remove concrete \$ 500.00
(surfacing is not included if concrete pad is removed)

Sandburg Elementary

27 TuffTurf Rubber Tiles – under Tire Swings \$ 2,250.00

Protective Surfacing – add 6" wood fiber on top of pea gravel/ w fabric (materials only)
100 cubic yards + fabric \$ 2,650.00

Chain Walk Chain and replacement bolts replaced and installed (at time of other work) \$ 315.00

Replace Climber with new Skyrail Climber – material only \$ 2,445.00
Remove old climber and install new \$ 660.00

8 TuffTurf Rubber Tiles under 2-sets of swings material only \$ 675.00

Protective Surfacing – wood fiber 140 cubic yards \$ 3,150.00

Contact Playworld for caulk for slide spaces

Schenk Elementary

Protective Surfacing , wood fiber, for swings, climbers, chin up bars \$ 2,250.00
100 cubic yards – materials only

Replace structure #3 Spyroslide only \$ 3,775.00
Remove old slide and install new and drive pins into border so they are flush with top \$ 715.00

Structure #4 replacement (see diagram on following pages) \$26,860.00
Removal of old structure and installation of new structure \$ 7,200.00

Schenk Elementary continued

Protective Surfacing – 2 Chinnup Bars – originally considered fitness components which do not require surfacing unless part of a playground. If surfaced 20 cubic yards wood fiber \$ 450.00
Surfacing delivered with other surfacing.

Structure #8 replacement of climber with Skyrail Climber \$ 2,445.00
Removal of old structure and installation of new structure \$ 670.00

Structure #9 replacement of climber with 4 Panel Cascade Climber \$ 2,200.00
Removal of old structure and installation of new structure \$ 600.00

Shorewood Elementary

Work completed in 2007

Stephens Elementary

Protective Surfacing work completed in 2007

Van Hise – Hamilton Elementary

18 TuffTurf Rubber Tiles materials only \$ 1,495.00

Protective Surfacing – 6" wood fiber over existing pea gravel \$ 2,250.00
100 cubic yards

Replace parts Structure #3 \$ 2,430.00
2- Pipe walls, Bubble Panel, Banister slide with Firepole, horizontal ladder w/ panel materials only

Remove old components and install new \$ 880.00

Prices are valid for material ordered and installed in 2009, however, this is an estimate and for each site, pricing and quantities must be verified before work can begin. Please let me know if you have any questions, or if I have left anything out.

Sincerely,

Ann Szalkowski