



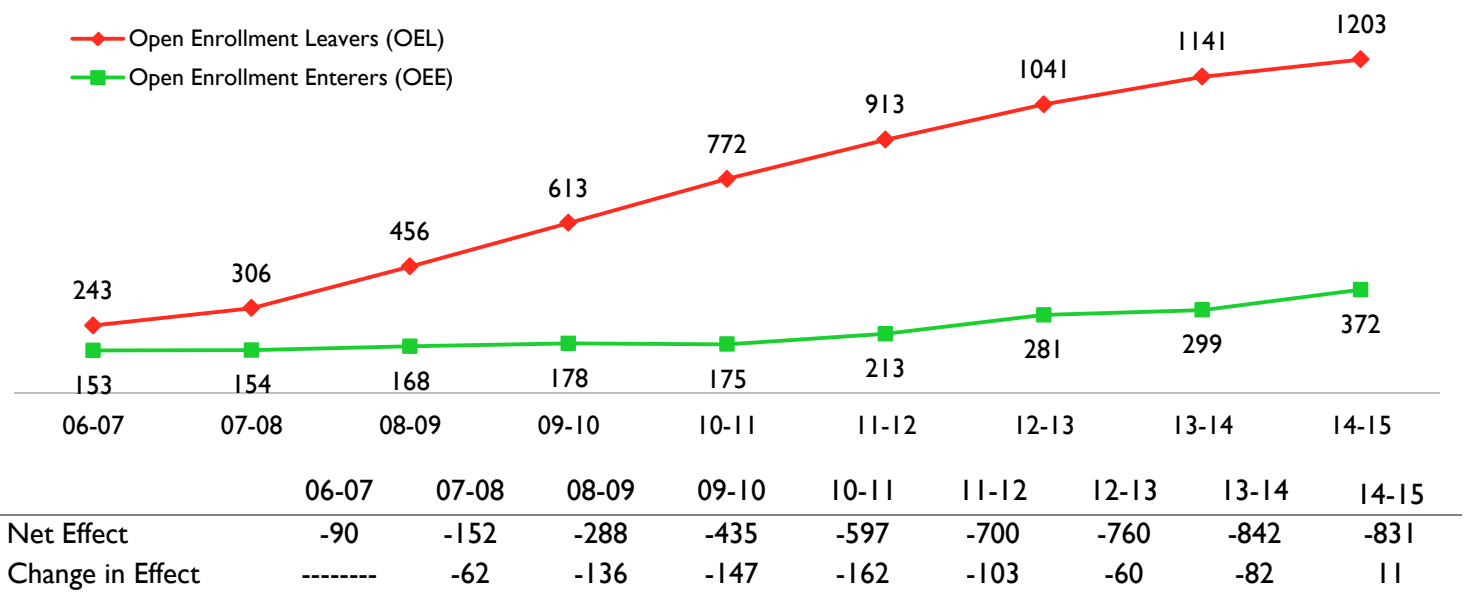
Open Enrollment Report Fall 2014

Key Findings

1. The net effect of open enrollment decreased to 831 students leaving the district for the 2014-15 school year from 842 in 2013-14. This is the first decrease in more than a decade.
2. The number of open enrollment leavers increased to 1203 for the 2014-15 school year from 1141 in 2013-14, an increase of 5%.
3. The number of open enrollment enterers increased to 372 for the 2014-15 school from 299 in 2013-14, an increase of 24%.
4. The number of first-time open enrollment leavers decreased to 356 students from 374 students, the second straight year of decreases.
5. The number of first-time leavers that were not previously enrolled in another district decreased to 115 students from 219 students, a decrease of 47%. The percent of first-time leavers that were not previously enrolled in another district decreased to 32% from 59%, the lowest percentage on record. This indicates that far fewer students open enrolled out of MMSD who had not previously attended another district.

This report presents a history of open enrollment in MMSD, as well as detailed breakouts of open enrollment for the 2014-15 school year. Open enrollment in Wisconsin took effect for the 1998-99 school year, in which MMSD had fewer than 20 leavers. Due to the Family Educational Rights and Privacy Act (FERPA), we suppress student counts of six or fewer and this is indicated by “---” in data tables.

Total 4K-12 Open Enrollment Leavers and Enterers



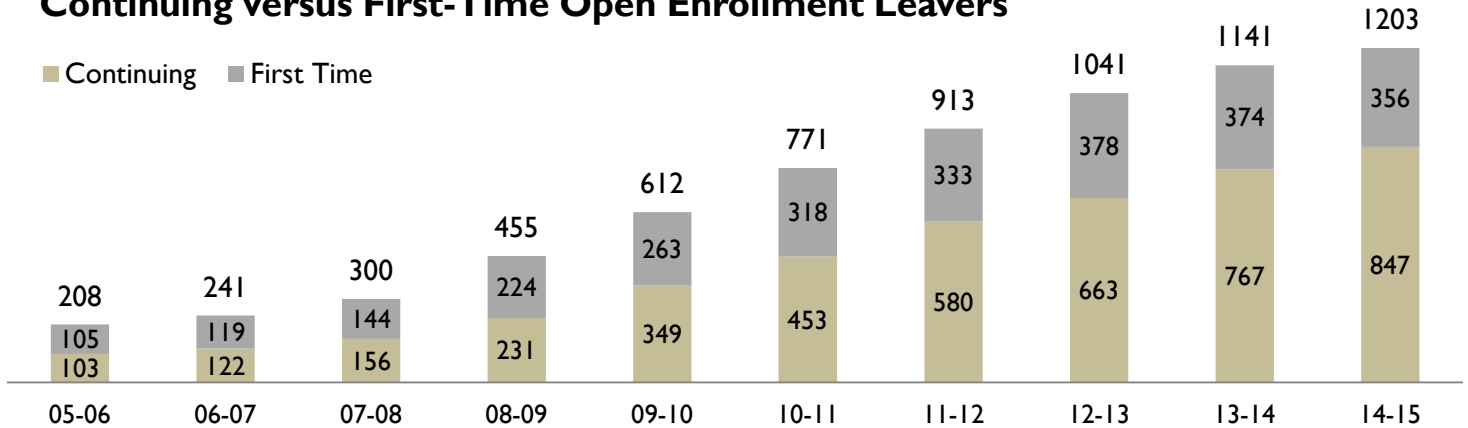
For the 2014-15 school year, MMSD has 1203 leavers and 372 enterers for a net effect of 831 students choosing to attend a district other than MMSD. This marked an improvement of 11 students in the net effect of open enrollment from last year and is the first improvement in the net effect in a decade.



Continuing and First-Time Leavers

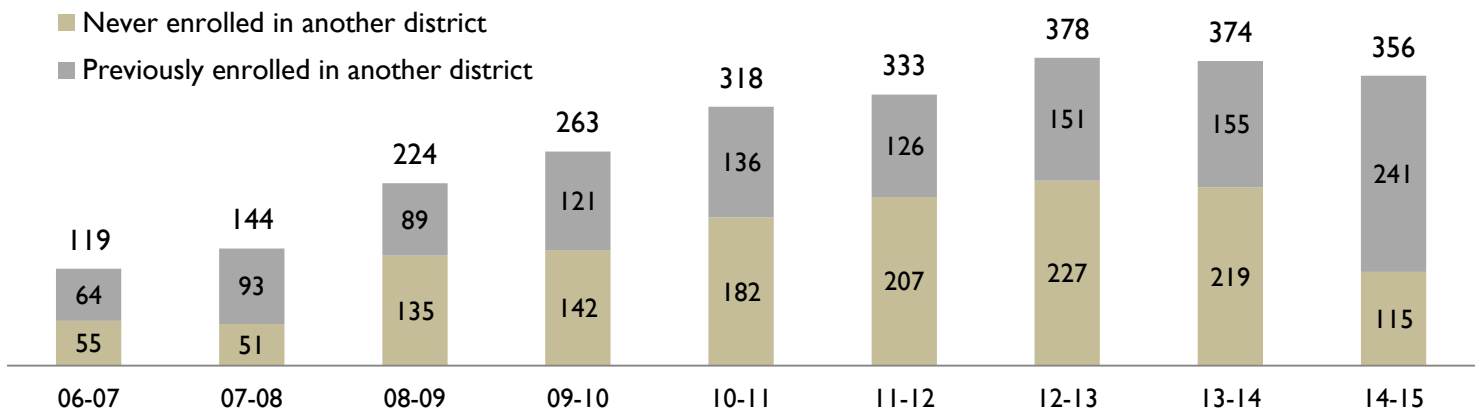
Of the 1203 leavers for the 2014-15 school year 847 are continuing leavers who open enrolled out of MMSD in previous years and 356 are first-time leavers. The total number of leavers has increased much faster than the number of first-time leavers each year due to the cumulative effect of open enrollment. The 2014-15 school year is the second year in a row that first-time open enrollment leavers have decreased from the prior academic year, and these are the only two years in which this has occurred. Although these decreases were relatively small, if they continue into future years, the cumulative effect of open enrollment will continue to decrease.

Continuing versus First-Time Open Enrollment Leavers



Of 356 first-time leavers in 2013-14, 241 were previously enrolled in another district and have moved to MMSD but have chosen to continue their enrollment in that other district. About 32% of first-time leavers, 115 students in all, are first-time leavers who had never enrolled in another district; this is a significant change from other years and is the lowest percentage on record. The number of first-time leavers who had never enrolled in another district decreased for a second straight year and significantly more than before. These students are a key subset of first-time leavers because their decision to leave the district is not related to prior enrollment elsewhere. If this number continues to decrease in future years as MMSD's population continues to grow, this may suggest that MMSD is having more success keeping students in the district. The largest shifts in the district were at Glendale, Elvehjem and Leopold, with 34, 13, and 13 fewer first-time leavers who had never enrolled in another district respectively. Glendale's 34 fewer students represents 33% of the net change district wide.

First-Time Open Enrollment Leavers by Prior Enrollment





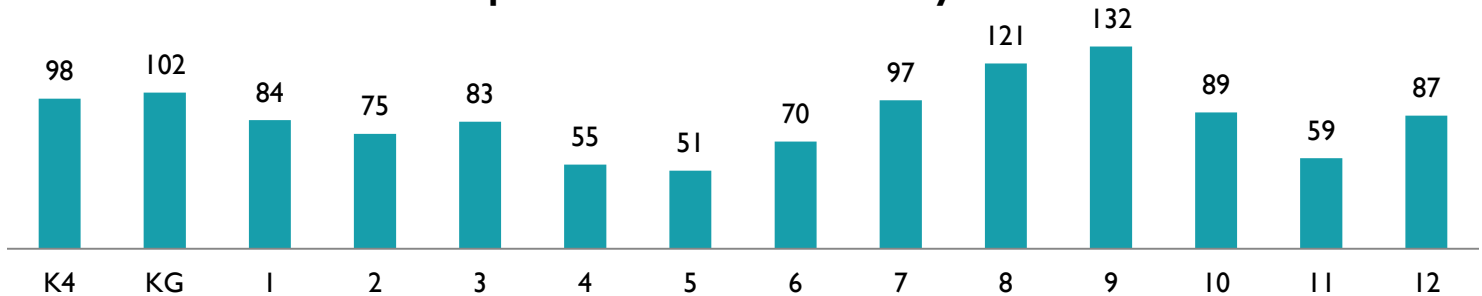
Characteristics of Open Enrollment Leavers

	Percent of 2014-15 Leavers	Percent of MMSD K-12	Difference
White	67%	44%	23%
Two or more races	7%	9%	-1%
Asian	6%	9%	-3%
African American	8%	18%	-9%
Hispanic	10%	20%	-10%

** Table organized from high to low on Difference

Open enrollment leavers are disproportionately white relative to the MMSD student population. The percent of the MMSD population that is African American and Hispanic is twice as large as the percent of the population of open enrollment leavers. Other demographic characteristics of open enrollment leavers are unavailable.

2014-15 Open Enrollment Leavers by Grade



A total of 200 leavers are in 4K or kindergarten.

Destinations for Open Enrollment Leavers

District	Students	District	Students	District	Students	District	Students
McFarland	262	Oregon	85	De Forest	30	Stoughton	10
Monona	212	Sun Prairie	77	Northern Ozaukee	16	Hayward	9
Verona	193	Waunakee	60	Mount Horeb	10	Appleton	7
Middleton	164	Merrill	31				

** Districts with fewer than 6 Leavers attending have been suppressed

The most common open enrollment destinations for MMSD students are McFarland, Monona Grove, and Verona. These schools are persistently the most common open enrollment destinations. McFarland is by far the most popular at the elementary and middle school levels and Verona and Monona Grove are the most popular at the high school level.

Fiscal Impact of Leavers

The table on the right outlines the fiscal impact of open enrollment leavers for the past five years and the estimated open enrollment expense for 2014-15.

The estimated open enrollment expense is offset partially by the estimated open enrollment income for 2014-15 of \$ 2,468,220. The expected net loss due to open enrollment is \$ 5,706,100. The expected transferred funds for each open enrollee for 2014-15 school year is \$ 6,635.

	Open Enrollment Leavers Expense
09-10	\$ 3,959,737
10-11	\$ 5,071,592
11-12	\$ 5,532,301
12-13	\$ 6,559,583
13-14	\$ 7,167,686
14-15	\$ 8,174,320 (estimate)



Notes on Optional Attendance Zones

This report presents internal transfer figures for some students living in optional or assigned attendance zones (denoted as Zone Allied El Asg, Zone Opt Toki/Jef, etc.). The optional high school attendance zone was created many years ago to allow low-income minority students to have a choice of schools. Middle school optional attendance zones were created because some students live within walking distance of a school that is not the school they typically would attend. Students living in the Allied Assigned attendance area are assigned to one of three schools to prevent a high concentration of low-income students in a single school.

Elementary Leavers by School and External District

The table of elementary school leavers by attendance area and external district attended appears on the next page. The schools with the highest number of open enrollment exits are Glendale (99) and Leopold (97). Eighty-one of the 99 open enrollment leavers from Glendale enrolled in the McFarland School District, which is in close proximity to many parts of the Glendale attendance area. Similarly, the Leopold attendance area borders the Oregon and Verona school districts. Open enrollment, clearly, is most common for schools that are very close to other districts and represents a persistent, structural part of the open enrollment process.

The most common open enrollment destinations for elementary school leavers are McFarland (138), Monona (77), and Middleton (67). Most open enrollment leavers attend other districts in Dane County, although some choose to attend districts further away (such as Appleton and Northern Ozaukee), mainly through virtual academic programs. For the 2014-15 school year the number of open enrollment leavers attending virtual schools was 76, a decrease of 32 students from last year's number of 108.



Elementary Leavers by School and External District

Attendance Area of Residence	Non-MMSD District	McFarland	Monona	Middleton	Oregon	Verona	Wausaukee	Sun Prairie	Merrill	De Forest	Mount Horeb	N. Ozaukee	Hayward	Stoughton	Barneveld	Cambridge	Columbus	Deerfield	Pecatonica	Wisconsin Heights	Appleton	Belleville	Dodgeville	Geneva J4	Genoa City J2	Marshall	Monroe	Portage	Grand Total	
	Glendale		81	12																										
Leopold					58	18																								97
Allis		11	15																											49
Elvehjem		11	19																											39
Kennedy			12					7																						37
Huegel				10		7																								24
Hawthorne		8						7																						23
Schenk			7																											23
Chavez						15																								22
Stephens				16																										21
Gompers							10																							18
Mendota							12																							18
Falk				7																										14
Lindbergh						7																								13
Olson				7																										13
Sandburg								9																						13
Orchard Ridge																														11
Midvale																														8
Crestwood																														7
Emerson																														7
Lake View																														7
Franklin																														
Lapham																														
Lincoln																														
Lowell																														
Marquette																														
Muir																														
Randall																														
Thoreau																														
Zone Allied																														
Grand Total		138	77	67	64	57	46	44	27	21	8	8																		588

* Table is ordered from high to low horizontally and vertically on the Grand Total figures
 Suppression of values less than 6 is indicated by ---. Blank values indicate a 0.



Middle Leavers by School and External District

Attendance Area of Residence	Non-MMSD District															Grand Total
	McFarland	Monona	Middleton	Verona	Oregon	Sun Prairie	De Forest	Appleton	N. Ozaukee	Waukesha	Waunakee	Hayward	Merrill	Mount Horeb	Grantsburg	
Sennett	28	19	--	--	--	--	--	--	--	--	--	--	--	--	--	55
Toki	--	--	--	13	--	--	--	--	--	--	--	--	--	--	--	26
Cherokee	--	--	--	--	10	--	--	--	--	--	--	--	--	--	--	19
Sherman	--	--	--	--	--	--	--	--	--	--	--	--	--	--	--	18
Whitehorse	7	--	--	--	--	--	--	--	--	--	--	--	--	--	--	17
Jefferson	--	--	--	--	--	--	--	--	--	--	--	--	--	--	--	15
Black Hawk	--	--	--	--	--	--	--	--	--	--	--	--	--	--	--	11
O'Keeffe	--	--	--	--	--	--	--	--	--	--	--	--	--	--	--	--
Zone Opt Toki/Jef	--	--	--	--	--	--	--	--	--	--	--	--	--	--	--	--
Hamilton	--	--	--	--	--	--	--	--	--	--	--	--	--	--	--	--
Zone Allied Ms Asg	--	--	--	--	--	--	--	--	--	--	--	--	--	--	--	--
Zone Opt Cher/Ham	--	--	--	--	--	--	--	--	--	--	--	--	--	--	--	--
Grand Total	53	29	24	17	13	9	--	--	--	--	--	--	--	--	--	176

* Table is ordered from high to low horizontally and vertically on the Grand Total figures
 Suppression of values less than 6 is indicated by ---. Blank values indicate a 0.

High Leavers by School and External District

		Non-MMSD District																		Grand Total			
Attendance area of residence		Verona	Monona	Middleton	McFarland	Sun Prairie	Waunakee	Oregon	Stoughton	Grantsburg	N. Ozaukee	De Forest	Appleton	Sauk Prairie	Waukesha	Janesville	Lodi	Marshall	Merrill		Monroe	Wisconsin Heights	
Memorial		90	---	57	8	---	---	---	---	---	---	---	---	---	---	---	---	---	---	---	---	---	168
La Follette		---	76	---	48	8	---	---	---	---	---	---	---	---	---	---	---	---	---	---	---	---	151
East		---	25	---	10	15	8	---	---	---	---	---	---	---	---	---	---	---	---	---	---	---	70
West		27	---	---	---	---	---	---	---	---	---	---	---	---	---	---	---	---	---	---	---	---	48
Zone Opt High School		---	---	---	---	---	---	---	---	---	---	---	---	---	---	---	---	---	---	---	---	---	---
Grand Total		119	106	73	71	24	10	8	---	---	---	---	---	---	---	---	---	---	---	---	---	---	439

* Table is ordered from high to low horizontally and vertically on the Grand Total figure
 Suppression of values less than 6 is indicated by ---. Blank values indicate a 0.