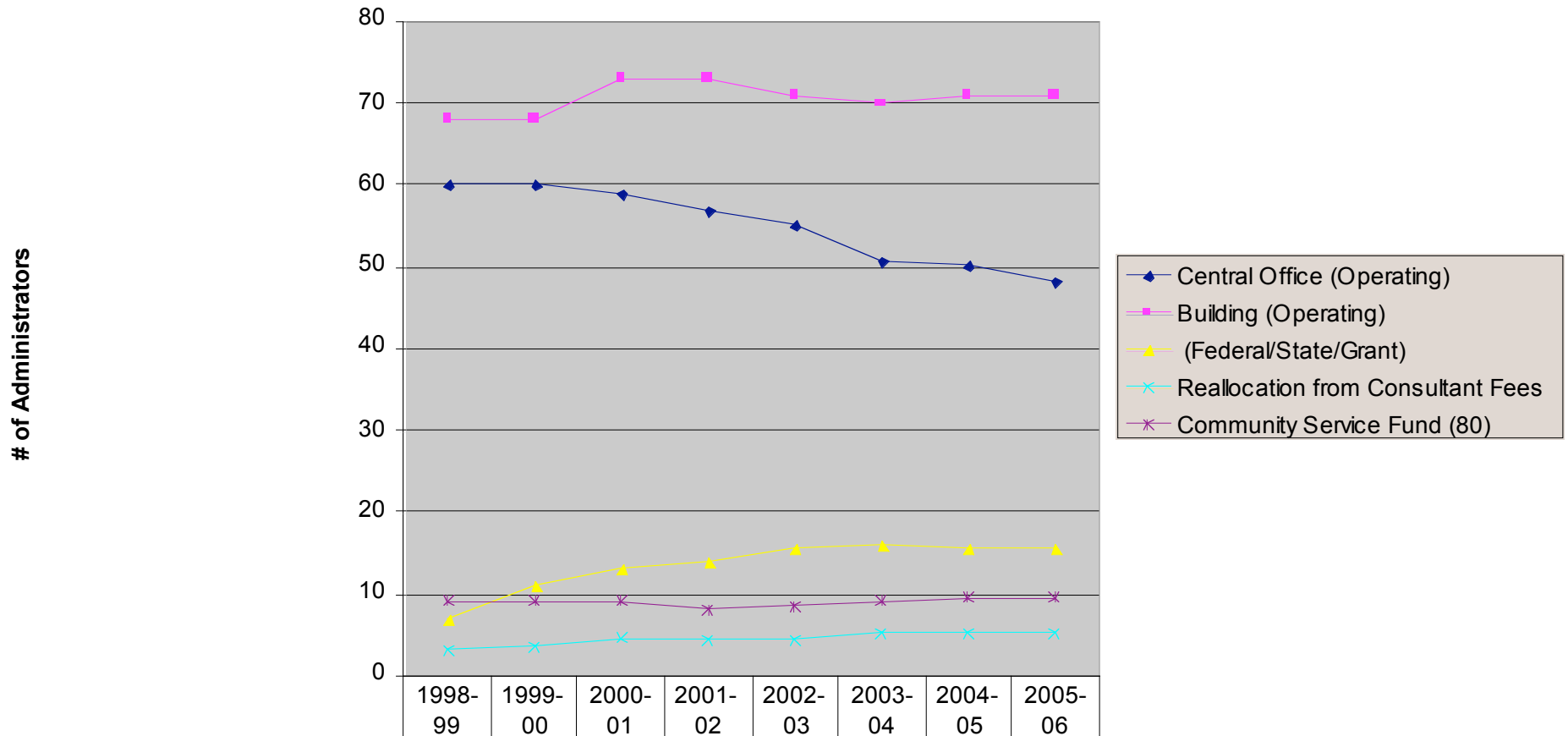


### # of Administrators/Professionals by Funding Source



|                                   | 1998-99 | 1999-00 | 2000-01         | 2001-02         | 2002-03         | 2003-04         | 2004-05         | 2005-06 |
|-----------------------------------|---------|---------|-----------------|-----------------|-----------------|-----------------|-----------------|---------|
| Central Office (Operating)        | 60      | 60      | 59              | 57              | 55              | 50.7            | 50.2            | 48.2    |
| Building (Operating)              | 68      | 68      | 73 <sup>1</sup> | 73 <sup>2</sup> | 71 <sup>3</sup> | 70 <sup>4</sup> | 71 <sup>5</sup> | 71      |
| (Federal/State/Grant)             | 7       | 11      | 13              | 14              | 15.5            | 16.1            | 15.7            | 15.7    |
| Reallocation from Consultant Fees | 3       | 3.5     | 4.5             | 4.25            | 4.25            | 5.25            | 5.25            | 5.25    |
| Community Service Fund (80)       | 9       | 9       | 9               | 8               | 8.5             | 9               | 9.5             | 9.5     |

Budget Year

**NOTES**  
 1- Elem. Asst Principals Added (+4)  
 Chavez added (+1)  
 2- Elementary Asst Prin. Reduced (-1)  
 Temp. High School Asst Prin. (+1)  
 3- Elem Asst Prin reduced (-1)  
 Temp. High School Asst Prin. Removed (-1)  
 4- High School Assistant Principal Removed (-1)  
 5- Nestro Mundo added (+1)

## **CURRENT ADMINISTRATIVE VACANCIES FOR 2005-06**

- " Assistant Superintendent/Elementary Schools**
- " Assistant Superintendent/Secondary Schools**
- " Coordinator/Vocational Education**
- " Budget Analyst**
- " Nuestro Mundo Principal**
- " Jefferson Middle School Principal**
- " Hamilton Middle School Principal**
- " Wright Middle School Principal**
- " East High School Principal**
- " 1 Middle School Assistant Principal**
- " 2 High School Assistant Principals**

## **ADMINISTRATIVE POSITIONS ELIMINATED FOR 2005-06**

- " Risk Manager**
- " Data Manager**