

WEST HIGH SCHOOL

SMALLER LEARNING  
COMMUNITIES

January 8, 2007

Ed Holmes, West High Principal

Heather Lott, West High SLC coordinator

# West SLC Grant Goals

- Create an environment that promotes emotional and physical safety, where all students connect meaningfully to the school and the community.

**In order to**

- Improve academic performance for all students at West.

# West High School 2002



**1 building principal**  
**4 grade-level principals**  
**6 Counselors assigned alphabetically**  
**4 Support staff**  
**14 Special Education teachers**  
**135 General Education teachers**



SLC 1  
Principal

*Counselor  
Social Worker*

*Psychologist  
Special Ed.*

SLC 4  
Principal  
*Counselor  
Social Worker  
Psychologist  
Special Ed.*

•9-12 SLC Principal and Support Team

SLC 3  
Principal  
*Counselor  
Social Worker  
Psychologist  
Special Ed.*

SLC 2  
Principal

*Counselor  
Social Worker*

*Psychologist  
Special Ed.*

**West High School 2003-04 (Grant year 1)**

SLC 1

Principal  
Counselor  
Social Worker  
Psychologist

Special Ed.  
**Core 9**

SLC 4

Principal

Counselor  
Social Worker  
Psychologist  
Special Ed.  
**Core 9**

SLC 3

Principal

Counselor  
Social Worker  
Psychologist  
Special Ed.  
**Core 9**

- 9-12 Principal and Support Team
- Resource Halls**
- Honor Guard**
- 9<sup>th</sup> Grade Core**
- 9<sup>th</sup> Grade Teacher Collaboration**

SLC 2

Principal  
Counselor  
Social Worker  
Psychologist

Special Ed.  
**Core 9**

**West High School 2004-05 (Year 2)**

# Core 9 Teacher Collaboration

SLC 1	SLC 2	SLC 3	SLC 4
Algebra	Algebra	Algebra	Algebra
Biology 9	Biology 9	Biology 9	Biology 9
US History	US History	US History	US History
English 9	English 9	English 9	English 9
Special Ed.	Special Ed.	Special Ed.	Special Ed.
ESL	ESL	ESL	ESL

## Regent Community

### Principal

- Counselor
- Social Worker
- Psychologist

### Special Ed.

- Core 9
- Advisory 9
- Student Govt.

## Ash Community

### Principal

- Counselor
- Social Worker
- Psychologist
- Special Ed.
- Core 9
- Advisory 9
- Student Govt.

## Highland Community

### Principal

- Counselor
- Social Worker
- Psychologist
- Special Ed.
- Core 9
- Advisory 9
- Student Govt.

- 9-12 Principal and Support Team
- Resource Halls
- 9<sup>th</sup> Grade Core
- 9<sup>th</sup> Grade Teacher Collaboration
- **Personal Learning Plan (PLP)**
- **Resource Time / Lunch & Learn**
- **Freshman Advisory**
- **SLC Commissions**

## Van Hise Community

### Principal

- Counselor
- Social Worker
- Psychologist

### Special Ed.

- Core 9
- Advisory 9
- Student Govt.

# West High School 2005-06 (Year 3)



## Regent Community

Principal

*Counselor*

•*Social Worker*

•*Psychologist*

*Special Ed.*

*Core 9*

*Advisory 9*

*Student Govt.*

**Core 10**

Ash

Community

Principal

•*Counselor*

•*Social Worker*

•*Psychologist*

•*Special Ed.*

•*Core 9*

•*Advisory 9*

•*Student Govt.*

•**Core 10**

Highland  
Community

Principal

•*Counselor*

•*Social Worker*

•*Psychologist*

•*Special Ed.*

•*Core 9*

•*Advisory 9*

•*Student Govt.*

•**Core 10**

- 9-12 Principal and Support Team
- Resource Halls
- 9<sup>th</sup> & 10<sup>th</sup> **Grade Core**
- 9<sup>th</sup> & 10<sup>th</sup> **Grade Teacher Collaboration**
- Personal Education Plan (PEP)
- Resource Time / Lunch & Learn
- Freshman Advisory
- **Embedded Honors**

## Van Hise Community

Principal

•*Counselor*

•*Social Worker*

•*Psychologist*

*Special Ed.*

*Core 9*

*Advisory 9*

*Student Govt.*

**Core 10**

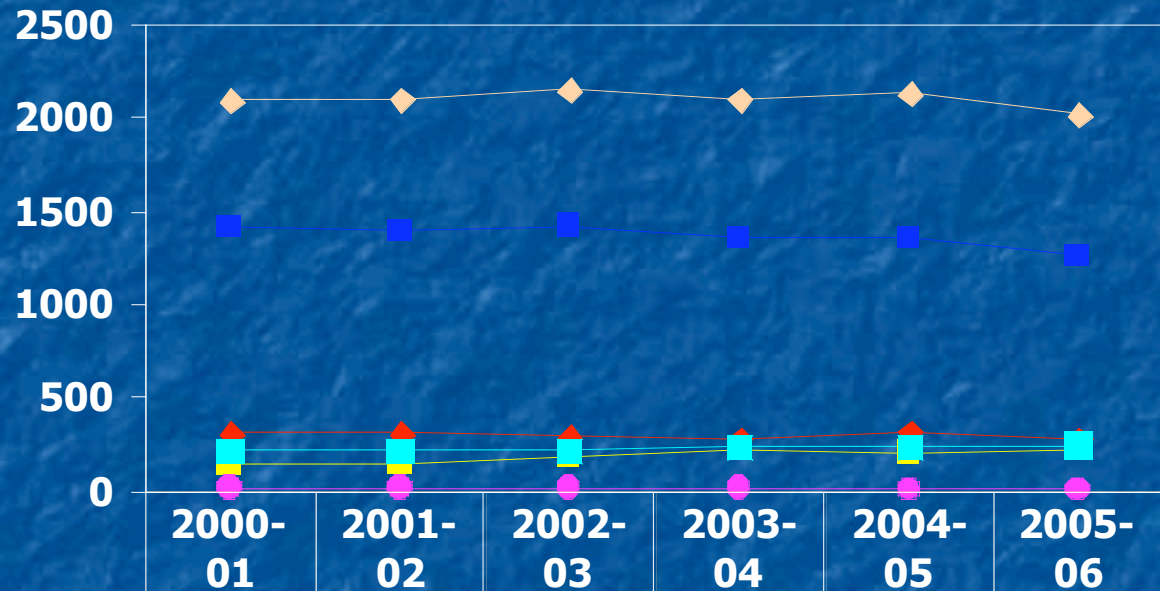
# West High School 2006-07(After grant)



# New Enrichment Opportunities

- **Resource Time**: over 100 clubs, study groups, and other student supports.
- **Resource Halls**: tutoring provided in 9<sup>th</sup> & 10<sup>th</sup> grade study halls.
- **Honor Guard**: students who are trained to provide the tutoring/mentoring in Resource Halls.
- **Freshman Advisory**: peer mentor/tutoring 4 days/week.
- **Embedded Honors**: offered within the class for Western Civilization, English 10, Biology 9, and Integrated Math 1, 2, and 3.
- **Expanded AP**: AP American Government

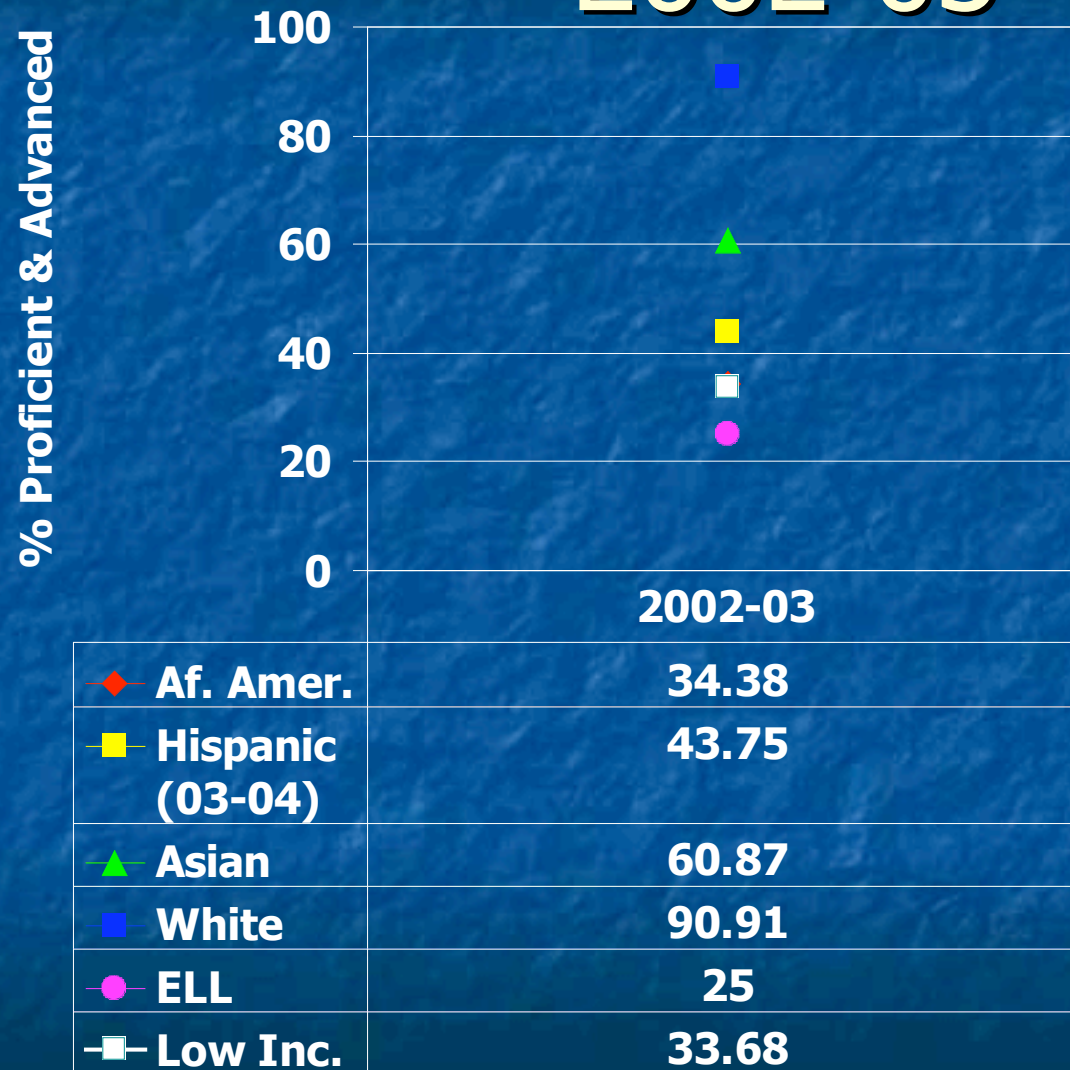
# Enrollment



◆ Af. Amer.	308	315	296	283	321	285
■ Hispanic	142	155	194	220	213	220
■ Asian	217	219	218	234	237	242
■ White	1411	1396	1424	1351	1350	1260
● N. Amer.	15	21	19	17	12	12
◆ Total	2093	2106	2151	2105	2133	2019

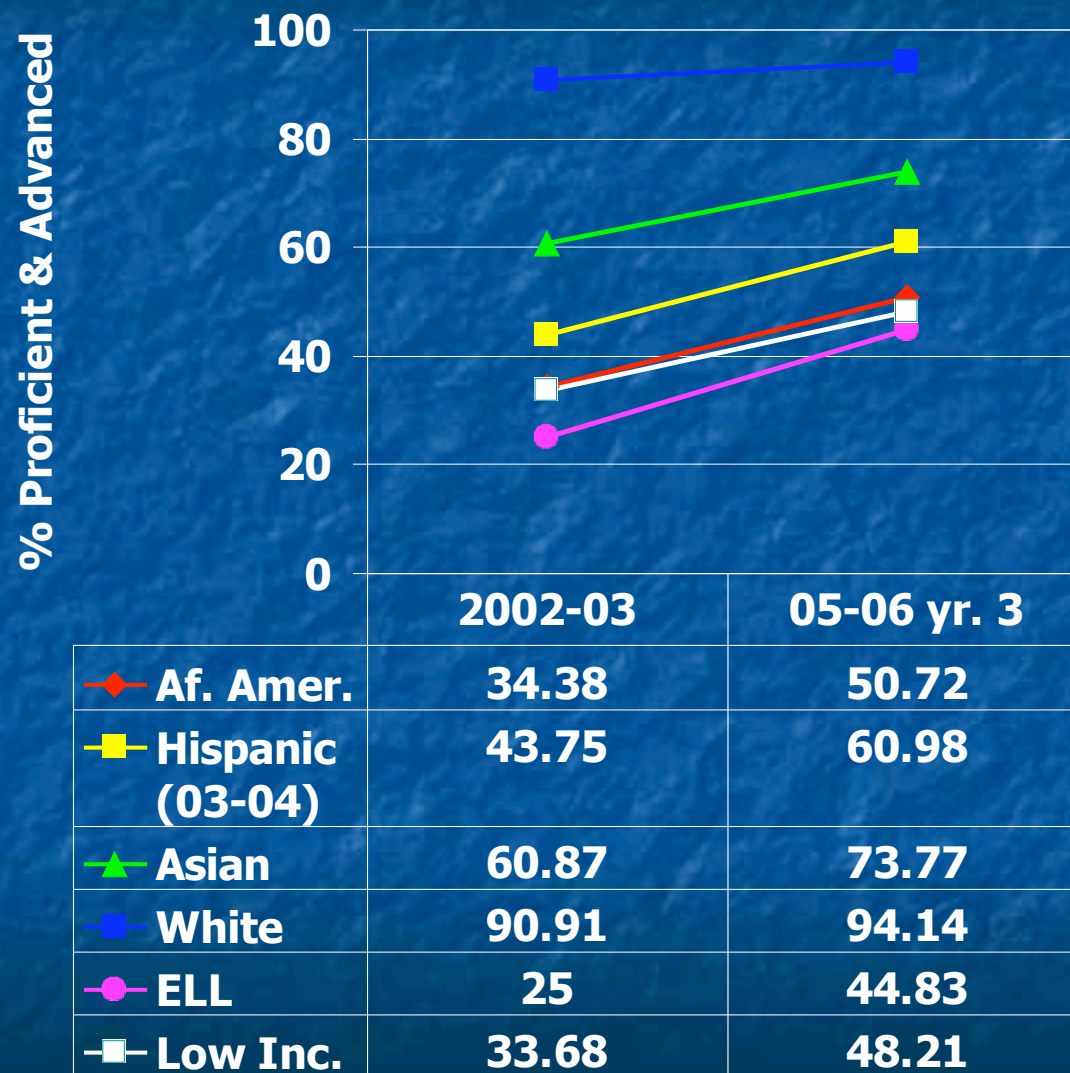


# WKCE Reading/Language Arts 2002-03



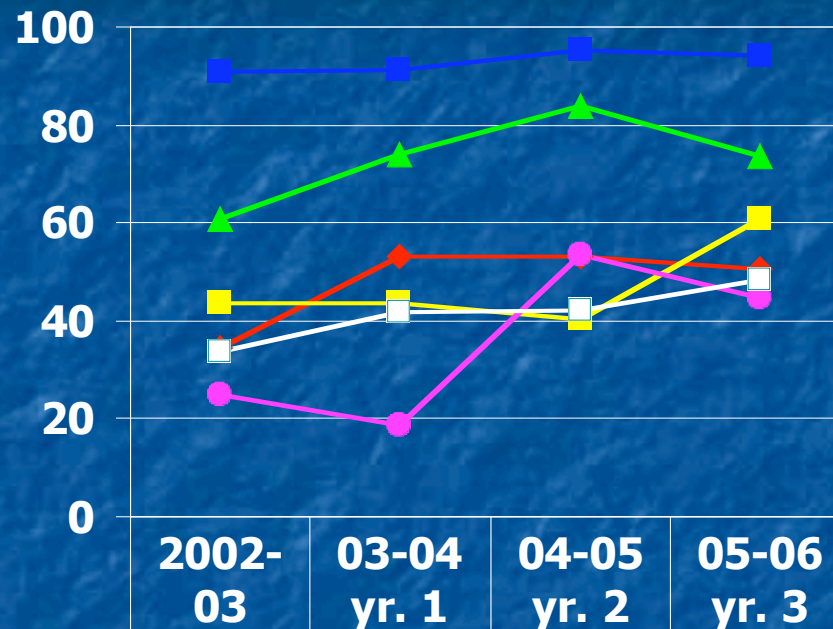


# WKCE Reading/Language Arts



# WKCE Reading/Language Arts

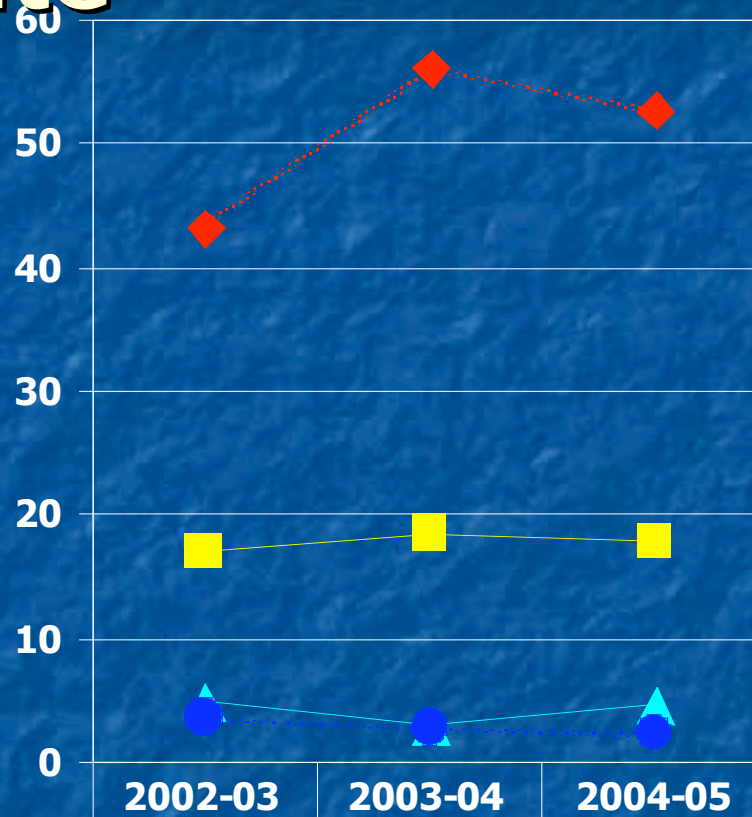
% Proficient & Advanced



◆ Af. Amer.	2002-03	03-04 yr. 1	04-05 yr. 2	05-06 yr. 3
■ Hispanic (03-04)	34.38	52.94	53.03	50.72
▲ Asian	43.75	43.75	40.38	60.98
■ White	60.87	73.81	83.93	73.77
● ELL	90.91	91.07	95.27	94.14
■ Low Inc.	25	18.75	53.42	44.83
	33.68	41.67	42.11	48.21



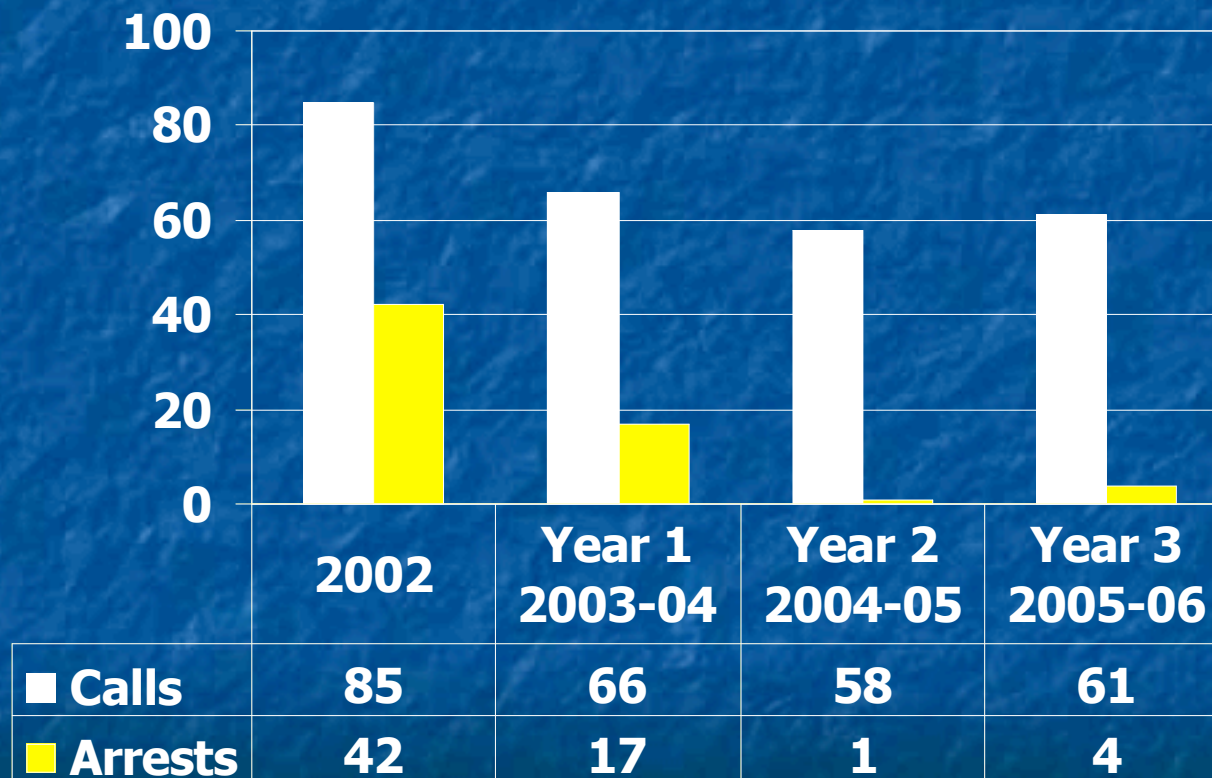
# Suspension Rate



	2002-03	2003-04	2004-05
<span style="color: red;">◆</span> Af. Amer.	43.2	56.1	52.7
<span style="color: yellow;">■</span> Hispanic	17	18.6	17.9
<span style="color: cyan;">▲</span> Asian	5.05	2.99	4.66
<span style="color: blue;">●</span> White	3.72	2.89	2.45



# Police Calls



# Post-Grant Planning Teams

- Freshman Advisory Committee received local grant to continue
- PLP team received local grant to continue.
- Special Education Accommodations and Modifications team
- Department Chairs lead curriculum improvement efforts.
- Equity Team



# To Sustain SLCs at West

- Continuous improvement and evaluation of all initiatives
- Staff-designed professional development
- Collaborative time embedded for all staff
- Fully implement PLP
- Fully implement Career Pathways
- Strengthen identity of SLCs
- Move classrooms and offices to accommodate SLCs